

ASEAN Food Security Information System



# Rice Growing Outlook

REPORT



June  
2026



## Rice Growing Outlook Report

June, 2026

---

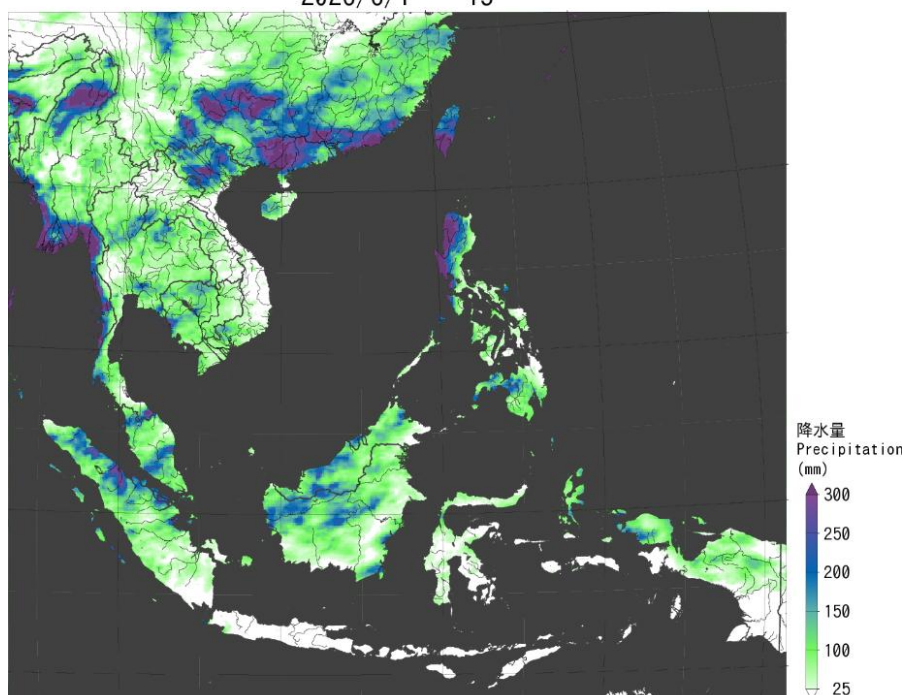
### Overview

In the Northern side of SE-Asia, the cultivation of wet season rice starts in all countries and regions and the growing stage is in seeding to tillering stage. Planting area is expected to be normal or slightly decrease, and early growing conditions of wet season rice are generally favourable. This rainy season is expected to see a shortage of rainfall, raising concerns about the overall growing condition of the wet season rice.

In the Southern side of SE-Asia, the wet season rice harvest is expected to be completed this month. Total production is expected to be normal. On the other hand, the dry season rice planting is generally progressing smooth, although there have been some delays. Overall, crop conditions remain satisfactory, supported by stable weather conditions and adequate irrigation water supply.

### JASMAI: Precipitation condition in early June

2026/6/1 ~ 15



## Brunei

Planting for the dry season rice has been completed and about 10% the planted areas will be ready for harvest soon, whereas the remaining areas are mostly in the latter half of the tillering stage and panicle forming stage under favorable weather condition. If the solar radiation rates remain high, this will be helpful in obtaining a good yield in the next few months. Current outlook is slightly good.

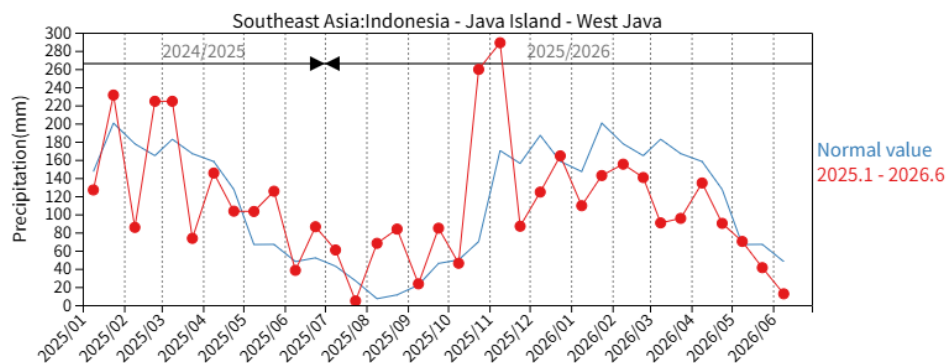
## Cambodia

In June, the wet season rice planted area reached 58% for 2.94 million ha of the national planting plan. While the growing is in tillering stage with good growth condition. The weather condition is favourable due to enough sunshine.

## Indonesia

The wet-season rice harvest is estimated to be completed this month, with the total harvested area reaching 6.3 million hectares, a slight increase over last year. However, rice yield is expected to be marginally lower than the previous year due to reduced rainfall during the growing period.

June also marks the third month of dry season rice planting, with the total planted area recorded at 2.9 million hectares. Planting activity remains relatively low as many farmers are still preparing land following the wet season harvest. Although rainfall conditions differ across regions, no significant damage has been reported.



JASMAI precipitation graph: Rice yield is expected to be marginally lower than the previous year due to reduced rainfall during the growing period

## Laos

In June, the wet season rice has entered the plowing and field preparation stage, and early planting has begun, progressing smoothly across the northern and central provinces. The national planting plan for lowland rice this year is around 833 thousand hectares, reflecting a modest increase from the previous year. Production is expected to exceed 3.3 million tons, supported by initial rainfall in late May and early June.

## **Malaysia**

Dry season rice planting progress has reached approximately 78% of the target area, while early harvesting has commenced, covering around 20% of the planted area. Overall, crop conditions remain satisfactory, supported by stable weather conditions and adequate irrigation water supply.

Some areas may experience below-normal rainfall during the month. However, no significant pest outbreaks or natural disasters affecting crop growth have been reported.

## **Myanmar**

Harvest of dry season rice in Myanmar is almost completed with over 930 thousand hectares. It produced 5.2 million tons of paddy with a yield of 5.5 tons per hectare. The yield is good and similar to last year. The overall condition of the dry season rice is good and the harvesting work is going well.

National plan for planting area of wet season rice in this year is set as 6.04 million hectares. The planting of the wet season rice is started from this month but it's still about 157 thousand hectares in rainfed areas accounting 2.6% of the national plan.

## **Philippines**

Wet season rice planted in April to May is in tillering to young panicle forming stage. Expansion in the area planted was reported due to favorable weather conditions and adequate water supply from irrigation facilities. No tropical cyclone entered within the Philippine Area.

Overall, the outlook for wet season rice crop growing conditions is fair to good across most provinces. Near normal to above normal rainfall is expected in the coming months.

## **Thailand**

Wet-season rice is currently in the sowing and early tillering stages. The planted area is expected to decline due to lower rice prices and rising production costs, particularly for fertilizers, pesticides and fuel.

Paddy yield is forecast to decrease as a result of drought conditions and reduced fertilizer application. Consequently, total rice production is projected to be lower than last year.

## **Vietnam**

In Northern Viet Nam, the winter-spring rice (dry season rice) is currently being harvested with an area of 0.36 million hectares. Harvesting activities are accelerating with the onset of the rainy season. Yield prospects are slightly favorable, supported by conducive weather conditions and adequate irrigation water availability.

In Southern Viet Nam, the summer-autumn rice (wet season rice) is in the sowing and tillering stages. The planted area reached 0.83 million hectares. Planting progress are slower than in the previous year due to delays in harvesting the winter-spring crop, prolonged hot weather in some areas, and higher fertilizer and pesticide prices.

\*JASMAI is an open and free system

<https://jasmai.maff.go.jp/en/>