



RICE GROWING OUTLOOK REPORT

FEBRUARY 2023





Rice Growing Outlook Report

February, 2023

Overview

In the Northern side of SE-Asia, the planting of dry season rice has almost completed in all countries and regions. This season rice total planted area is expected to increase due to enough irrigation water. The growing stage is in the vegetative to harvesting stage and the general growing condition is good under favorable weather conditions and a high yield is expected.

In the Southern side of SE-Asia (Indonesia), the harvesting of wet season rice is progressing much faster than last year. The yield is good under enough sunlight during the growing period. The total planted area so far is 6.2 million hectares, which is 14.8% higher than the last wet season. The growing condition is good due to enough irrigation water.

Cambodia

The planting of dry season rice reached 666 thousand hectares and it increased by around 6% than last year. While the growing stage is in harvesting time, it has harvested around 25% of the cultivated area. The yield is estimated at 4.50 tons per hectare.

Generally, the weather of the growing period of dry season rice seems to be good with a good yield.

Indonesia

This February is in the second harvesting month of wet season rice. The harvesting is progressing much faster than last year and it is 1.6 million hectares. The yield is good due to enough sunlight during the growing period.

This month is also the fifth month of planting wet season rice. The total planted area is 6.2 million hectares, which is 14.8% higher than the last wet season. The vegetative and the early generative rice of the wet season is in good growing condition due to enough irrigation water, especially in the northern part. The planting of wet season rice continues still but it's almost in the final season. Some areas are reported flooded, but no caused of damage to rice growing.

Laos

The dry season is in the seeding and tillering stages. The planted area so far is 68 thousand hectares and 72 % of the national production plan. The final planted area is estimated to be lower than the national production plan because of poor rain and insufficient natural water for irrigation.

Generally, the rice growing condition in this season is slightly poor due to poor agricultural water conditions and less sunlight for cultivation.

Myanmar

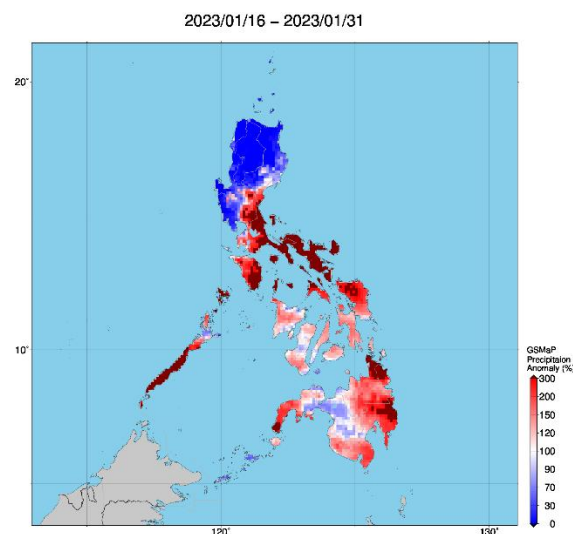
Up to this month, the dry season rice has been planted over 772 thousand hectares accounting for 72% of the national plan of 1.06 million hectares. The planting progress is similar compared to last year. However, it is predicted that the planting areas may be higher than last year due to the high availability of irrigation water for the dry season rice under favorable weather conditions this year. Over 80% of the total planted area was occupied for direct seeded rice in this season.

The overall growing condition of the dry season rice is good, and the growing stage is in tillering to panicle formation stages mainly.

Philippines

Dry season rice planted during the period of November to December is currently in the young panicle forming stage to the heading stage. A very high precipitation index was noted in most parts of Luzon, Visayas, and western parts of Mindanao during the second half of January. The country is continuously assessing and validating damages and losses in some of the affected rice areas.

Generally, the crop growing condition of dry season rice is fair to good in most parts of the country.



JASMIN precipitation anomaly graph: A very high precipitation index was noted in most parts of Luzon, Visayas, and western parts of Mindanao during the second half of January

Thailand

The dry season rice is in the young panicle forming stage and grain filling stage. The planting area reached up to 119% of the national plan (cultivation promotion area plan). Due to higher irrigation water compared to the same period last year, the planted area increased by about 19%. However, the government is encouraging farmers to plant other high price and less water-intensive crops instead of rice. Yield and production are expected to increase due to sufficient water and favorable weather condition.

Vietnam

In the North of Vietnam, the sowing of dry season rice (winter-spring rice) started. The sown area so far is estimated at 107 thousand hectares, 89.9% of the same period last year. The progress of sowing is slow due to the prolonged cold weather.

In the South, the dry season rice (winter-spring rice) is in the sowing stage. The current sown area is 1.82 million hectares. Some provinces (mainly in the Mekong River Delta) start the harvesting of dry season rice under favorable weather conditions.