



RICE GROWING OUTLOOK REPORT

AUGUST 2023





Rice Growing Outlook Report

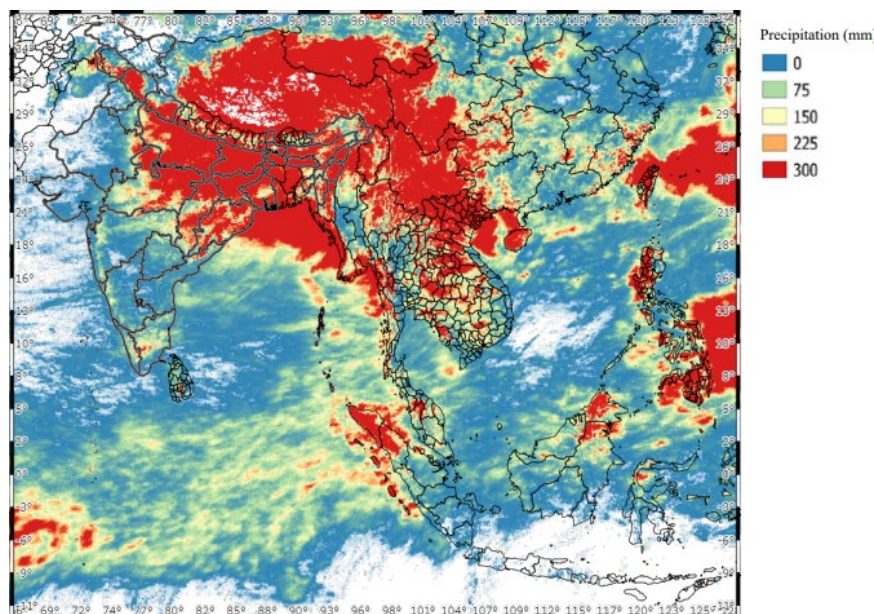
August, 2023

Overview

In the Northern side of SE-Asia, the planting of wet season rice has almost completed and the total planted area is forecast to decrease slightly due to agricultural water shortage by the delayed start of the rainy season. The growing stage is in the tillering to the harvesting stage mainly. The current growing condition is assessed to be fair to good excluding Thailand where water shortage is particularly serious. Several typhoons brought heavy rains and flooded some areas, but the damage was not serious.

In the Southern side of SE-Asia (Indonesia), the total planted area reached 3.9 million hectares, but the planting progress is slightly delayed than last year. On the other hand, the harvesting of early dry season rice has started and the yield condition is fair, but the harvest work is slightly delayed. The growing condition is generally good under rainfall in late July.

Precipitation condition in early August



This map is provided by Indian Space Research Organisation (ISRO) under the APRSAF/SAFE agromet project

<https://www.eorc.jaxa.jp/SAFE/project/agromet>

Cambodia

The early rice of the wet season is in the grain filling stage to harvesting. The planted area reached around 2.57 million hectares, 98% of the national planting plan. At the beginning of this month, a wide area was hit by heavy rain, and about 3,000 hectares of paddy fields suffered from flood damage. The yield is forecast to slightly decrease due to flood damage in these areas. While the early wet season rice harvest has already been completed with 20% of the cultivated area. The current yield is estimated at around 4.38 tons per hectare. The yield is expected to slightly increase more than last year if stable weather condition continues.

Indonesia

This August is the fifth month of planting dry season rice. The total planted area so far is 3.9 million hectares and the progress is 6.1% lower than last year. Farmers are still preparing the land after harvesting the wet season rice.

This August is the second month of the dry season rice harvest. The current harvested area is 1.7 million hectares, the harvest work is slightly delayed than last year. The yield is fair despite the less precipitation during the growing period.

The growing condition is generally good under rainfall in late July. The less rainfall is continuing this month, but there are no reports of significant damage due to drought.

Laos

The wet season of lowland rice is in the young panicle forming stage. The planting work has been completed in all regions and the total planted area is 763 thousand hectares. In general, the weather condition and irrigation water supply in this month is good for the early paddy growing, but some planted areas are affected by flood and landslide due to heavy rain in this month. The total affected area is about 30 thousand hectares and the damaged area is 1,200 hectares.

The upland rice is in the young panicle forming stage. The total planted area is 100 thousand hectares. Some pest outbreaks in paddy fields are reported this month.

Myanmar

Planting progress of the wet season rice has reached 4.5 million hectares accounting for 73.8% of the national plan (6.07 million hectares), but it is less than 50% in central Myanmar. The planting is in the peak period with favourable monsoon rain during this month. The planting progress is slightly faster than last year.

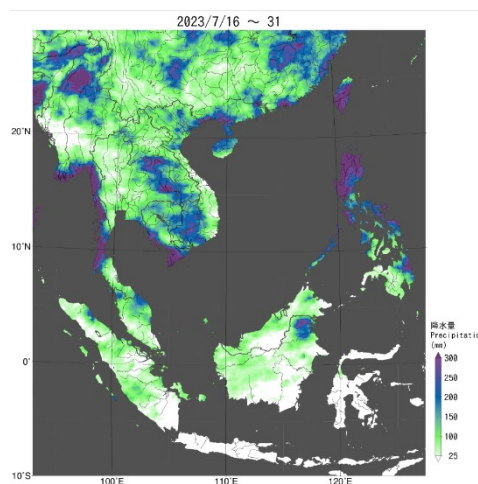
The monsoon floods are caused in wide areas, especially in the lower Myanmar and river basin areas due to heavy rain. It is reported that about 22 thousand hectares of planted areas have been affected by the floods and over 11 thousand hectares have been damaged. Replanting has

been operated for 560 hectares of the damaged fields. Most of the planted wet season rice is now at the tillering stage to panicle formation stage and the overall growing condition is good.

Philippines

The wet season rice planted in April to May is currently in the maturing to harvesting stage. For the second half of July, the country was affected by the passage of three tropical cyclones. Especially super typhoon “Egay” affected most regions of the country that caused damage to the infrastructure and agricultural sector. Based on the report from the Department of Agriculture, around 115 thousand hectares of paddy field were affected with a volume loss of 42.8 thousand metric tons.

For now, the crop growing condition of wet season rice is fair to good despite the damage caused by the typhoon. Most parts of the country are more likely to receive near normal weather conditions this month, however, Visayas will likely experience below to near average temperatures.

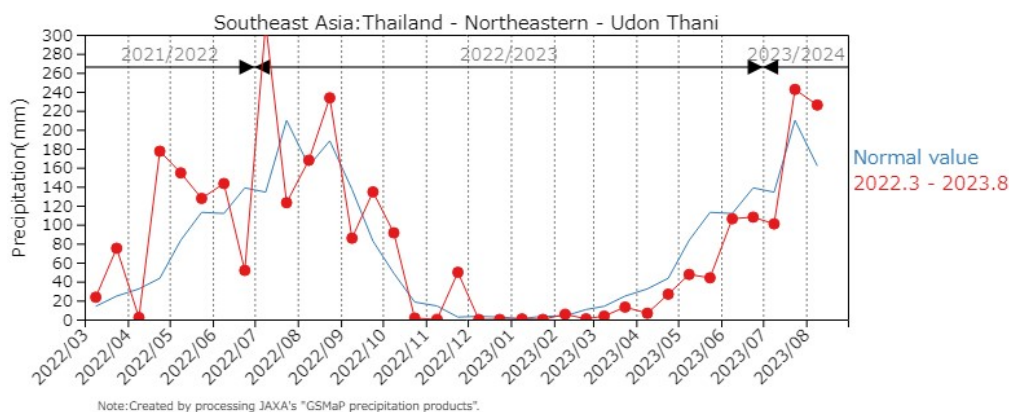


JASMAI Precipitation Graph (late July): The country was affected by the passage of three tropical cyclones.

Super typhoon “Egay” affected most regions of the country that caused damage

Thailand

Wet season rice is in the tillering stage. Now it has been cultivated approximately 55% of the total expected planting. The rice planted area is forecast to decrease from last year because of drought. During May-July, rainfall was less than last year in all regions and it is forecast that it will decrease in August, causing a reduction in the number of tillers, concerning a high risk of damage from disease and pests. As a result, it is expected that yield and total production will be decreased compared to last year.



JASMAI Precipitation Graph (Udon Thani): Rainfall has recovered, but the impact of less rainfall during the planting season is significant

Vietnam

In the North, the summer-autumn rice (wet season rice) is in the young panicle forming stage. In addition, the main wet season rice (seasonal rice) is in the seeding stage. The rice-growing condition is good due to better irrigation preparation.

In the South, the summer-autumn rice is in the harvesting stage. The harvested area reached 0.49 million hectares out of 1.73 million hectares planted. The yield is forecast to be slightly higher than last year due to warm weather and better irrigation preparation. On the other hand, the other wet season rice (autumn-winter rice and seasonal rice) is in the growing stage under good growing conditions.

*JASMAI is an open and free system

<https://jasmai.maff.go.jp/en/>