



# **RICE** **GROWING** **OUTLOOK** **REPORT**

---

**APRIL 2023**





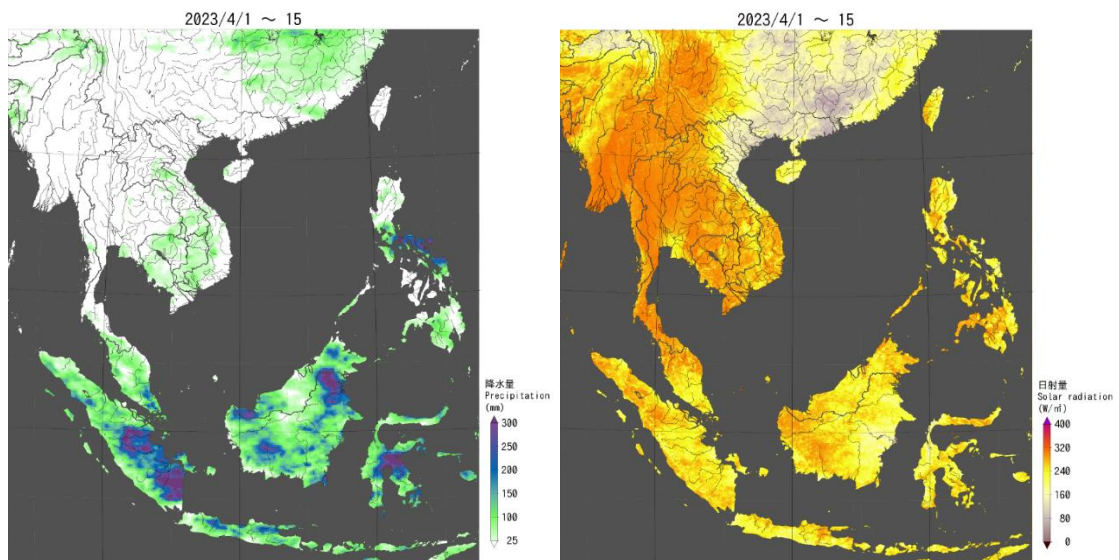
## Rice Growing Outlook Report

April, 2023

### Overview

In the Northern side of SE-Asia, this month is the peak month of the dry season rice harvest. The total harvesting area is estimated to increase due to enough irrigation water. The yield condition is generally good under favorable moderate rainfall and sunshine. On the other hand, the sowing of wet season rice in South Vietnam starts earlier than last year under stable weather conditions

In the Southern side of SE-Asia (Indonesia), the harvesting progress of wet season rice is a bit slower than last year, but the yield is good under enough sunlight during the growing period. This month is the first month of planting dry season rice, the planted area is still low due to the farmer still preparing the land after harvesting. The growing condition is good due to enough irrigation water.



JASMAI precipitation and Solar radiation map in early April

JASMAI

<https://jasmai.maff.go.jp/en/>

## **Cambodia**

The harvesting of dry season rice has almost completed and the yield of this season rice is estimated at 4.68 tons per hectare which is slightly good than last year.

In this month, the rainfall starts in some regions so the rice fields around the Tonle sap lowland start to plow for planting in the wet season.

## **Indonesia**

The total harvesting of wet season rice until this April is a bit slower than last year and it is 4.3 million hectares. The yield is good due to enough sunlight during the growing period.

This April is the first month of planting dry season rice, the planted area is still low due to the farmer still preparing the land after harvesting. The vegetative and the early generative rice of the dry season is in good growing condition due to enough irrigation water, especially in the southern part. Several areas have entered the dry season, such as northern Sumatra, eastern Java, and the Southeast Nusa region, while most areas are still with moderate to high rainfall. So far there are no reports of areas affected by flooding or drought.

## **Laos**

The dry season rice is in the harvesting stage. The harvested area has progressed about 19% of the planted area which is 96 thousand hectares. The final yield of this dry season rice is estimated to increase than last year which was 4.5 tons per hectare due to stable weather conditions during the rice growing season.

In general, the weather condition for rice growing in this season is quite good and the irrigation water supply in this season is still abundant for the rice field.

## **Myanmar**

Up to this month, planting of the dry season rice has been completed with 0.99 million hectares accounting for about 93% of the national plan of 1.06 million hectares. Because about 70 thousand hectares of the planned area could not grow due to a shortage of irrigation water. As a result, the planted area in this season was the same as the normal year. On the other hand, over 400 thousand hectares of dry season rice accounting for 41% of the total planted area has been harvested mainly in the delta region. It produced about 2.0 million tons of paddy, and the yield is 4.98 tons per hectare. It is a good yield and slightly higher than last year.

The overall growing condition is good and the planting and harvesting work is going well too.

## **Philippines**

Dry season rice planted during the period of November to December is currently in the harvesting stage under good weather conditions. More than half of the planted area has been harvested already. Yield may be similar over the same period of last year.

Generally, the crop growing condition of dry season rice is fair. Most parts of the country are more likely to experience near to above normal rainfall conditions for the whole month of April.

## **Thailand**

The dry season rice is in the harvesting stage. The accumulated planted area is 1.9 million hectares, which is 47% higher than the national plan due to enough irrigation water and the high paddy price.

The harvest has completed 70% of the planted area and the yield is generally good due to sufficient water and favorable weather condition. The final production of this season rice is forecast to increase.

On the other hand, government requests farmers about restrictions on the use of agricultural water during March and April and warns on the preparation for drought damage by less rainfall and water shortage during late June and early July.

## **Vietnam**

In the North of Vietnam, the winter-spring rice (dry season rice) is in the tillering and young panicle forming stages. The yield is forecast to increase due to favorable weather and better irrigation preparation.

In the South, the winter-spring rice (dry season rice) is in the harvesting stage. The harvested area of dry season rice reached 1.08 million hectares out of 1.88 million hectares planted. The yield of harvested rice is 7.1 tons per hectare, 1.8% higher than the previous year's yield due to favorable weather and lower fertilizer prices.

On the other hand, the sowing of summer-autumn rice (wet season rice) in the Mekong River Delta proceeds at a good pace under stable weather conditions, and it is earlier than last year with the currently sown area of 0.29 million hectares.