



# Rice Growing Outlook Report

.....

**September 2022**





## Rice Growing Outlook Report

September, 2022

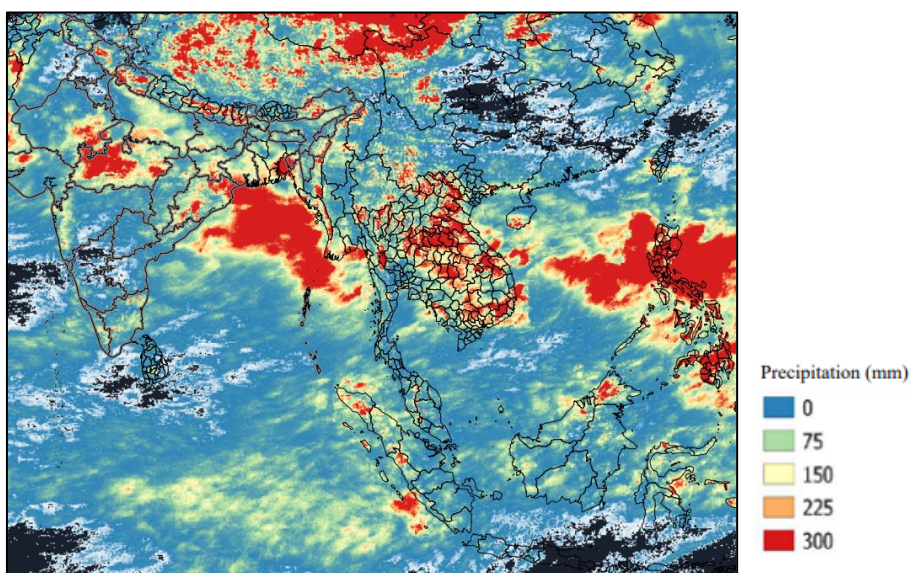
---

### Overview

In the Northern side of SE-Asia, the planting of wet season rice has almost completed and the main growing stage is young panicle forming to harvesting stage under enough rainfall conditions. August to early September, heavy rains hit some countries and areas, and floods were caused, but no significant damage has been done. The yield of wet season rice is expected to be normal under favorable weather conditions for rice.

In the Southern side of SE-Asia (Indonesia), the harvesting of dry season rice is underway and the yield is good under enough water and sunlight during growing period. Generally, the growing condition is good due to rainfall from August to early September.

### Precipitation condition in early of September



This map is provided by Indian Space Research Organization (ISRO) under the APRSAF/SAFE agromet project

<https://www.eorc.jaxa.jp/SAFE/project/agromet>

## **Cambodia**

The planting of wet season rice has almost completed with around 2.6 million hectares, 101% of the national plan. This month, the heavy rainfall continued and the affected area seems to increase more than normal year. While 60 percent of the cultivated area of early rice was harvested and the yield is estimated around 3.9 tons per hectare less than originally expected.

Generally, the forecasting of yield may be slightly good without natural disasters but normally disaster conditions always occurred during the harvesting period due to unfavourable weather.

## **Indonesia**

This September is the third month of the dry season rice harvest. The current harvested area is 2.6 million hectares and the harvest work is slightly delayed than last year. The yield is good under enough water and sunlight during the growing period.

The planting of dry season rice is in the late stage. The total planted area is 4.6 million hectares and it is 0.2% lower than last year. The growing condition is generally good under rainfall from late August to early September. Higher rainfall is recorded in some areas, but there are no reports of significant flood damage.

## **Laos**

The growing of wet season rice of lowland is in the young panicle forming stage to grain filling stage. The weather condition and irrigation water in this season are generally good for the paddy field due to enough rain for all regions. In the second half of August, some paddy fields in the central and south regions were hit by floods due to heavy rainfall, but no damage has been reported.

On other hand, the upland rice is also in the young panicle forming stage to grain filling stage under good conditions. In this season some areas in the north are affected by pests but the damage is not serious.

## **Myanmar**

This month, the planting of wet season rice has almost completed with 5.6 million hectares accounting for 92.6% of the national plan. It seems that enough monsoon rain favored the planting work of this wet season rice. The planting progress is similar to last year.

Due to heavy rain that occurred during this month, monsoon floods were caused in most areas. It is reported that about 1900 hectares of planted areas have been affected by the floods and 1400 hectares have been damaged. However, replanting has been operated for those damaged fields. For overall condition, most of the planted wet season rice is now at the panicle formation stage.

## **Philippines**

Wet season rice planted in April to May was fully harvested. Production was higher compared to the same period last year due to a sufficient amount of rainfall and lesser occurrence of pests & diseases. Wet season rice planted from July to August is in the tillering stage. From now on, low pressure areas, southwest monsoon, and two to three tropical cyclones are expected to affect the country.

For now, the crop growing condition of wet season rice is fair to good in most parts of the country.

## **Thailand**

Wet season rice is in the young panicle forming stage. The planted areas in the Northeastern region decreased due to the change to other crops such as sugarcane and the planting was delayed than last year due to heavy rainfall and flooding that occurred in May. The planted areas in Northern and Central regions are increased by sufficient water and satisfied paddy prices since last year. While the Meteorological Department forecasts above-average rainfall including the Monsoons from September to October, so the probability of flooding is high, and may not be able to grow rice at the time. The rice yield is expected to increase than last year when there was huge flood damage.

## **Vietnam**

In the North, the wet season rice is in the young panicle forming to grain filling stages. The rice-growing condition is good due to better irrigation preparation.

In the South, the summer-autumn rice is in the harvesting stage. The harvested area reached 1.11 million hectares out of 1.74 million hectares planted. The yield of rice is 5.7 tons per hectare, which is the same as last year. In addition, the other wet season rice (autumn-winter rice and seasonal rice) is in the growing stages under good growing conditions.