



Rice Growing Outlook Report

.....

October 2022



Rice Growing Outlook Report

October, 2022

Overview

In the Northern side of SE-Asia, the harvesting of wet season rice started in all countries and areas. For now, the yield condition is estimated to be generally fair due to enough rainfall during the growing period. On the other hand, the heavy rains continued from August to early October. Although there are differences in the damage degree, there are reports of damage from all countries. Due to these damages, there is concern that the final production will decrease.

In the Southern side of SE-Asia (Indonesia), the harvesting of dry season rice is underway and the yield is good under enough water during the growing period. While, the planting of wet season rice has started this month, but the progress delays than last year and the planted area is still limited.

Cambodia

The planted area of wet season rice has reached around 2.7 million hectares or 104% of the national plan. The heavy rainfall still continued and occurred flash flood damage in some rice fields in 21 provinces. The affected area has expanded to 5% of planted area in the east-north and north-west, especially the region around Tonle sap lake. While 60% of early rice was harvested and the yield was forecast to be around 3.9 tons per hectare, slightly lower than last year due to the flood. The government is providing seeds of rice and vegetables for support to affected farmers.

Indonesia

This October is the fourth month of the dry season rice harvest. The harvested area of dry season rice so far is 3.4 million hectares. The yield condition of dry season rice is forecast to be slightly good than last dry season due to enough precipitation during the growing season.

This month is also the first month of planting wet season rice, but the progress delays than last year, and the planted area is still limited. The crop is in the vegetative phases with good growing conditions under rainfall in late September to early October.

The October's rainfall is recorded at a high level in the western part and slightly decreases in the eastern part but there are no reports of significant damage due to flood or drought.

Laos

Wet season rice of lowland is in the grain filling stage to the early harvesting stage. The final planted area was 768 thousand hectares, 102% of the national production plan. The harvesting has completed about 20% of the planted area. In the second half of September, some areas have been affected by floods and pests. The total damage area is estimated at 1.6 thousand hectares. Generally, the yield and growing condition of this wet season rice are normal.

On the other hand, the upland rice is also in the grain filling stage to the early harvesting stage. The final planted area was 92 thousand hectares. The harvested area reached approximately 31% of planted.

Myanmar

The planting of wet season rice has closed with 6.0 million hectares accounting for 98.7% of the national plan. The progress of the planting work was similar to the last year. In this month, the growing stages on average are in the panicle formation stage.

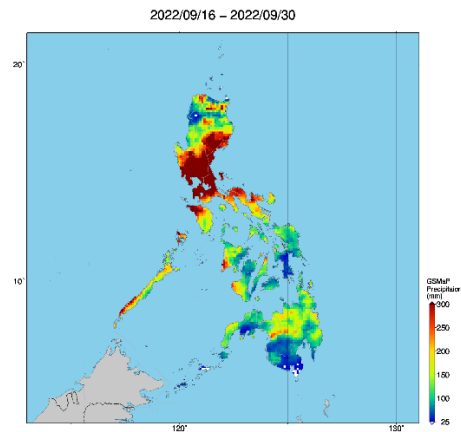
Although several rainy days occurred during this month, there is no significant damage to the wet season rice in most areas. The overall growing condition of the planted wet season rice is thus good.

On the other hand, the harvest of early wet season rice started this month. About 73 thousand hectares have been harvested and produced about 293 tons of paddy with a yield of 3.97 tons per hectare. The yield is good and slightly higher than last year.

Philippines

Wet season rice planted from July to August is in heading to the flowering stage. There were four (4) tropical cyclones that passed during the whole month of September. One of the tropical cyclones made landfall and brought strong winds and heavy to intense rainfall that resulted in floods and landslides in most parts of Northern and Southern Luzon. The damage situations are subject to further validation.

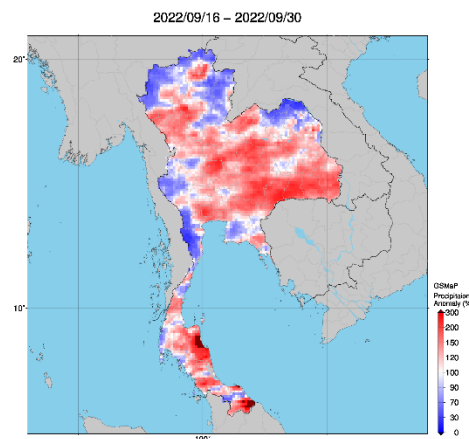
For now, the crop growing condition of wet season rice is fair to good in most parts of the country due to above normal rainfall conditions.



Precipitation map by JASMIN: Tropical cyclones resulted in floods and landslides in most parts of Northern and Southern Luzon

Thailand

Currently, wet season rice is in the grain filling stage. Heavy rain has been brought by Tropical Storm Noru and caused widespread floods in all regions in late September. The most damage to rice fields occurred in the Northeastern region. It is forecast to be as high as 20% of the total planted area in the region. While the damage to rice fields in the Northern and Central regions were less than in the Northeastern region because some areas have been harvested prior to floods and some areas have been changed to other crops. Consequently, the flood crisis is expected to cause a reduction in rice production this year.



Precipitation anomaly map by JASMIN: Heavy rain has been brought by Tropical Storm Noru and caused widespread floods

Vietnam

In the North, the wet season rice is in the grain filling stage, and some provinces have started to harvest. The yield is estimated at about 5.24 tons per hectare, which is 1% higher than last year due to better irrigation preparation.

In the South, the harvesting of summer-autumn rice (main wet season rice) has been completed. The average yield is estimated at 5.64 tons per hectare, 1% lower than the last year due to heavy rain that has affected the grain filling stage rice. In addition, the other wet season rice (autumn-winter rice and seasonal rice) is in the young panicle forming to harvesting stages. The yield forecasts are lower than last year due to heavy rain.