



Rice Growing Outlook Report

.....

November 2022



Rice Growing Outlook Report

November, 2022

Overview

In the Northern side of SE-Asia, this month is the peak harvest of rainy season rice. Countries and regions that suffered significant flood damage due to heavy rains caused by last month's typhoons have turned around from the estimation of good harvest until then, and the estimation for yield condition has changed from slightly poor to poor. On the other hand, in countries and regions that were not affected by the flood damage, the yield condition this season rice is expected to be slightly good to good due to enough rainfall during the growing season. The dry season rice is in field preparation to the seeding stage under favorable weather conditions.

In the Southern side of SE-Asia (Indonesia), the harvesting of dry season rice is almost finished this November. The total harvested area of dry season rice so far is 4.0 million hectares. The yield condition is forecast to be slightly good than last dry season. While, this month is also the second month of planting wet season rice, but the progress delayed than last year.

Cambodia

The harvesting of wet season rice has reached 884 thousand hectares. The yield estimates 3.7 tons per hectare, it's slightly decreased from last year. While the planting of dry season rice has progressed around 20% of the national plan (488 thousand hectares). The growing is in the sowing stage-tillering under good condition due to enough irrigation water and sunshine.

Indonesia

The harvesting of dry season rice is almost finished this November. The total harvested area of dry season rice so far is 4.0 million hectares, 0.2% lower than last year. The yield condition of dry season rice is forecast to be slightly good than last dry season due to enough precipitation during the growing season.

This month is also the second month of planting wet season rice, but the progress delays than last year, and the planted area is 1.3 million hectares still. The crop is in the vegetative phases with good growing conditions under rainfall in late October to mid-November.

The wet season's rainfall is recorded at a high level in the western part and slightly decreases in the eastern part but there are no reports of significant damage due to flood or drought.

Laos

The wet season rice is in the harvesting stage. The harvesting area of lowland rice has progressed to about 76% of the planted area. The final harvested area is estimated around 766 thousand hectares. The yield is expected to be 4.1 tons per hectare, slightly poor than last year due to the affection of floods and pests in the late growing season.

On the other hand, the final harvested area of upland rice is estimated around 92 thousand hectares, and the production is estimated around 184 thousand tons.

Myanmar

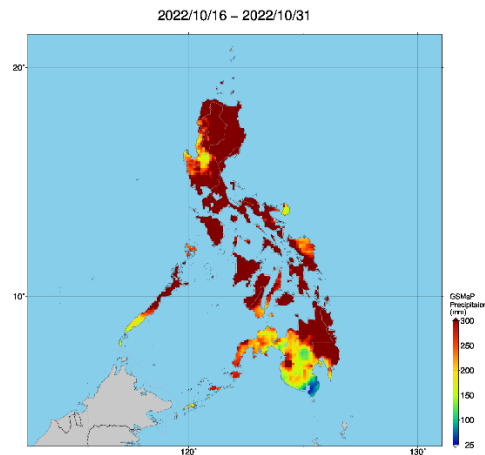
The planting of wet season rice for this year has been completed with 6.04 million hectares. The growing stage is in the panicle formation stage to the heading stage mainly. On the other hand, the early planted areas are starting to harvest. Up to this month, over 940 thousand hectares of the wet season rice has been harvested and produced about 3.7 million tons of paddy with a yield of 3.9 tons per hectare. The yield is very good and slightly higher than last year.

This month, there was no severe flood due to heavy rain. Most areas affected by the flood so far have been replanted for the wet season rice, and the rest areas would be grown winter crops in line with respective cropping patterns. The overall growing condition of wet season rice is good.

Philippines

Wet season rice planted in July to August is in the maturing to harvesting stage. During the whole month of October, the country experienced the passage of five tropical cyclones. One of the tropical cyclones resulted in severe damage to rice areas which was caused by heavy rainfall in most parts of Luzon, and some parts of Visayas and Mindanao. The country is continuously assessing and validating damages and losses in the rice areas.

The crop growing condition of wet season rice other than these affected areas is fair to good in most parts.

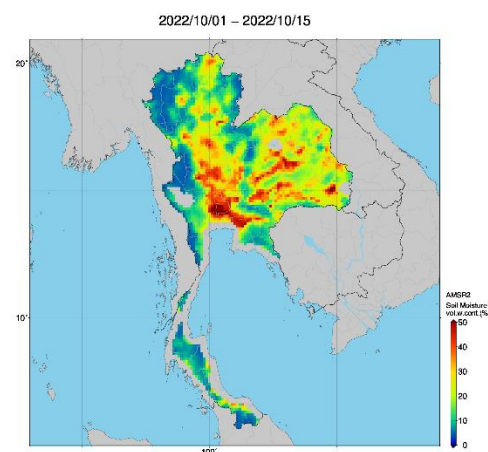


Precipitation map by JASMIN: the tropical cyclones resulted in severe damage to rice areas which was caused by heavy rainfall

Thailand

The wet season rice is in the harvesting period. The production is expected to be as poor as the previous year, which was hit by flood damage. In particular, the flood in October caused extensive damage to the Northeastern region, the main production area, and resulted in a decrease in production. On the other hand, despite flooding in the northern and central regions, rainfall is expected to have a positive impact on growing, and production is estimated to increase.

The dry season rice is in the land preparation period. Planted area is forecast to increase from last year due to sufficient water supply from irrigation systems and national resources.



Soil moisture map by JASMIN: the flood in October caused extensive damage to the Northeastern region

Vietnam

In the North, the wet season rice is in the harvesting stage with an area of 0.77 million hectares out of the total 1.52 hectares planted. The yield is estimated around 5.5 tons per hectare, 0.7% higher than the last year due to many stems by favorable weather conditions during the growing season.

In the South, the other wet season rice (autumn-winter rice and seasonal rice) is in the harvesting stage with a total harvested area of 0.46 million hectares. The yield is forecast around 5.5 tons per hectare. It is the same as the last year.

On the other hand, some provinces (mainly in the Mekong Delta) start the sowing of dry season rice (winter-spring season).