



Rice Growing Outlook Report

.....

May 2022



Rice Growing Outlook Report

May, 2022

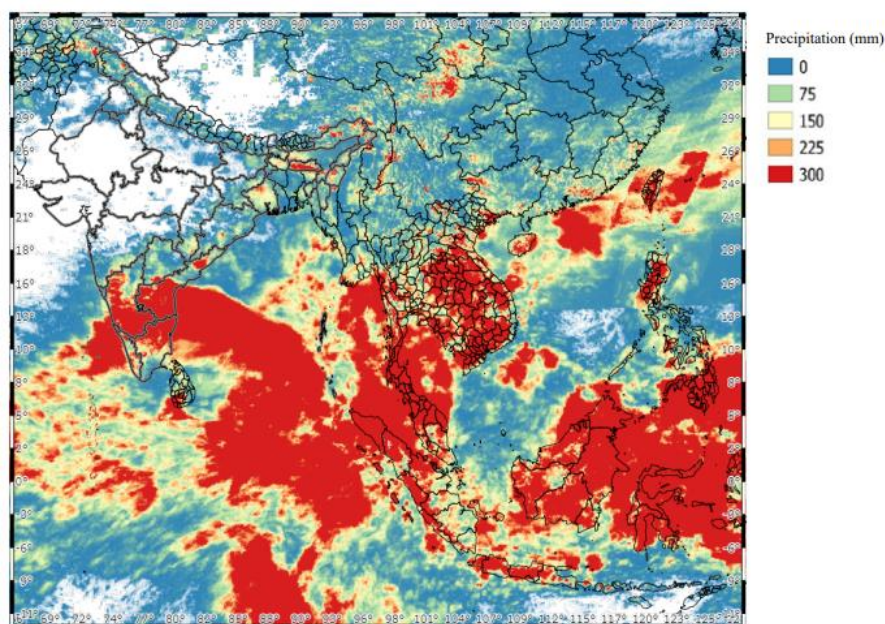
Overview

In the Northern side of SE-Asia, the harvesting of dry season rice has almost completed. The final production is estimated to be fair to slightly poor because while the planted area increased based on the high transaction price, the yield decreased due to storms and floods in some countries and regions. Especially in Philippines, some tropical storms occurred during the growing season, causing enormous damage to the Central and Southern regions.

On the other hand, the wet season rice is in the seeding to field preparation stage. Total planted are forecast to increase than last year under favorable weather condition.

In the Southern side of SE-Asia (Indonesia), the harvesting of wet season rice is in the final stage. The yield is good under enough water and sunlight during the growing period. If it is, as usual, This May is the second month of planting the dry season rice, but the planted area is limited.

Precipitation condition in early of May



This map is provided by Indian Space Research Organisation (ISRO) under the APRSAF/SAFE Agromet Project

<https://www.eorc.jaxa.jp/SAFE/project/agromet>

Cambodia

In this month, the seeding of wet season rice has started and it reaches 207 thousand hectares, 8% of the national plan (261 thousand hectares). The sowing work is slightly delayed from the last year.

Generally, the growing condition is good due to enough rainfall, Moreover, the restrictions on agricultural work by COVID-19 have been removed.

Indonesia

This May is the fifth month of harvesting the wet season rice. The total harvest is 5.3 million hectares and is 1.4% higher than last year. The yield is good under enough water and sunlight during the growing period.

This May is the second month of planting the dry season rice. But the planting is limited since farmers still preparing the land and waiting for the perfect time to plant the dry season rice. This May precipitation is decreasing especially on Java Island but other parts keep in a moderate level. The reduced rainfall does not cause damage to rice growing.

Laos

The dry season rice is in the final harvesting stage. The harvested area has progressed to about 81 % of the planted area. The final harvested area is estimated at 90 thousand hectares, with the paddy production is about 405 thousand tons and the yield would be 4.5 tons per hectare. The yield in this season is expected to decrease slightly from the national plan due to heavy rainfall and pest (mouse) damage. But, no seriously damaged areas were reported.

The national planting plan of wet season rice in 2022 is approximately 870 thousand hectares, and now it is in land preparation.

Myanmar

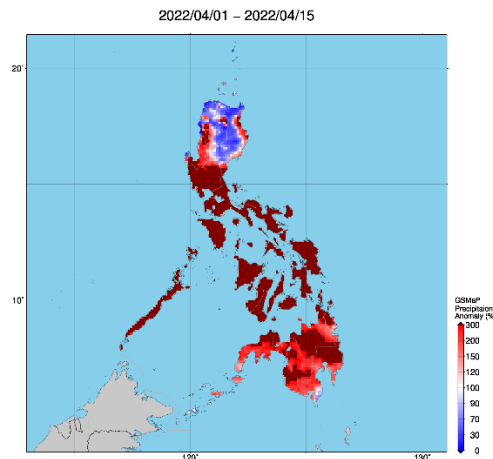
Up to this month in Myanmar, 678 thousand hectares of the dry season rice accounting for 69.2% of the total planted area (0.98 million hectares) has been harvested. It produced over 3.3 million tons of paddy, and the yield is 4.87 tons per hectare. It is a good yield and slightly higher last year.

There were several rainy days this month. However, it did not have an adverse effect on the harvest of the dry season rice. It is suggested that the early monsoon rain may bring positive impacts on growing wet season rice in this year.

Philippines

Dry season rice planted from November to December was fully harvested. The production was recorded at around 4.54 million metric tons, which was a decrease of -1.9% compared to the same period last year. Generally, the final assessment of this dry season rice is slightly poor as some of the provinces in Visayas experienced heavy rains, and some provinces in Mindanao experienced pest infestations during the maturing stage.

Preparation and planting of wet season rice have already started under favorable condition. The rainfall condition will likely be above normal in most parts of the country.



Precipitation Anomaly Map by JASMIN: Some of the provinces in Visayas experienced heavy rains

Thailand

The harvesting of dry season rice is almost completed. The production is expected to increase from last year by about 35% due to the expansion of the planted area. This year, there was sufficient rainfall throughout the growing season. Consequently, the yield also increased.

The wet season rice is in the field preparation time and farmers started to sow rice seeds in some areas. The planted area is forecast to increase because farmers expect that government will continue the income insurance scheme. However, there is a view that the planted area might not increase much because of the limiting cultivating area and the rising price of other crops such as sugarcane.

Vietnam

In the North of Vietnam, the winter-spring rice (dry season rice) is in the young panicle forming to grain filling stage. The yield is forecast to decrease due to rainstorms in early May 2022 in the North Midlands and mountain regions.

In the South, the winter-spring rice (dry season rice) is in the harvesting stage. The harvested area of dry season rice reached 1.57 million hectares out of 1.91 million hectares planted. The yield of harvested rice is 7.1 tons per hectare, slightly lower than last year due to floods in some provinces of the South Central coastal region.

On the other hand, the summer-autumn rice (wet season rice) in Mekong Delta is in the peak of seeding with the sown area of 0.51 million hectares.