



# Rice Growing Outlook Report

.....

**March 2022**





## **Rice Growing Outlook Report**

**March, 2022**

---

### **Overview**

In the Northern side of SE-Asia, the harvesting of dry season rice has started in some countries and areas. The final harvesting area of this dry season rice is expected to increase slightly from average under stable weather condition. Generally, the yield and growing condition is good. Water shortages are a concern in some regions, but not serious.

In the Southern side of SE-Asia (Indonesia), the harvesting of wet season rice is progressing faster than last year. The yield is good under enough water and sunlight during growing period. The accumulated planted area in this season was 6.8 million hectares, it is 8.8% higher than last season, and it is steadily expanding due to the intensive rainfall in the late February to mid-March.

### **Cambodia**

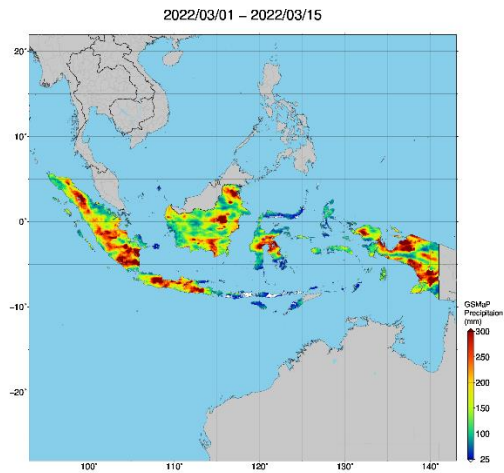
The final planted area of dry season rice was 639 thousand hectares, a decrease of around 1.5% from last year.

Generally, the growing condition of dry season rice is good. The harvest of dry season rice has completed 70%, and the average yield is 4.50 tons per hectare which is slightly increased than last year.

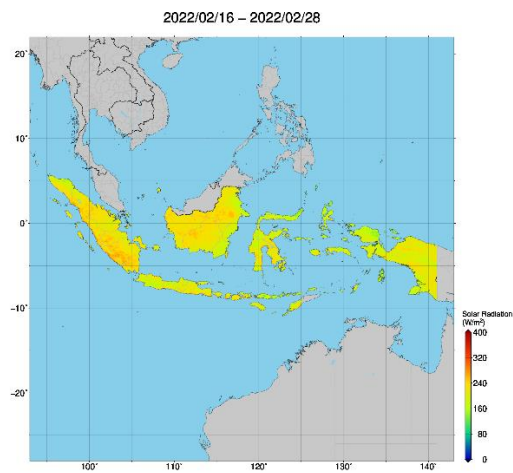
### **Indonesia**

This March is the third month of harvesting the wet season rice. The total harvest is 3.3 million hectares and it is 10.9% higher than last year. The yield is good under enough water and sunlight during the growing period.

This March is supposed to be last month of planting the wet season rice. The accumulated planted area is 6.8 million hectares, it is 8.8% higher than last wet season, and it is steadily expanding due to the intensive rainfall in the late February to mid-March. The vegetative and the early generative rice of the wet season is in a good growing condition due to enough irrigation water. This March precipitation is at a moderate to high level in some places but no caused of damage to the rice growing.



Precipitation Map by JASMIN:



Solar radiation Map by Jasmin

The yield is good under enough water and sunlight during the growing period.

The planting is steadily expanding due to the intensive rainfall in the late February to mid-March.

## Laos

The dry season rice growing condition is in young panicle forming stage. The planted area until this month is 90 thousand hectares or 96% of the national production plan due to late rain this year and conversion from rice to commercial crops.

The growing condition is slightly good compared to last year due to the rain at the end of the February. The weather condition in this season is favorable for the rice growth.

## Myanmar

Planting of the dry season rice will complete of the national plan of 0.97 million hectares in this month. The planting work is slightly faster than last year. It is suggested that the weather favors the planting of the dry season rice.

In this month, 60 thousand hectares of the dry season rice accounting for 7% of total planted area has been harvested mainly in delta region of Myanmar. The yield is 4.3 tons per hectare and it is slightly higher than last year.

The overall growing condition of the dry season rice is good in this year.

## **Philippines**

Dry season rice planted during the period of November to December is currently in the maturing up to harvesting stage. About 50% of the dry season rice was already harvested. Rice production for the first quarter of the year is generally projected to be fine.

Generally, the crop growing condition of dry season rice is good as most parts of the country are more likely to receive near to above normal rainfall conditions.

## **Thailand**

The dry season rice is in the grain filling stage and harvesting stage. The total production is forecast to increase due to the expansion of the planted area and sufficient water. Although, in February, some areas in the Northern region were reported with drought damage but the damage caused minor. Even though irrigation water has to be allocated more for some extended areas but the distribution of rainfall in all regions during the growing season is better than last year. Consequently, yields are expected to increase.

## **Vietnam**

In the North of Vietnam, the winter-spring rice (dry season rice) is in the early growing stage. The total sown area is 0.74 million hectares. The growing condition is normal due to the influence of prolonged cold weather.

In the South, the winter-spring rice (dry season rice) is in the harvesting stage. The harvested area reached 0.32 million hectares, out of 1.9 million hectares planted. The yield of harvested rice is 6.8 tons per hectare, which is better than last year.