



Rice Growing Outlook Report

.....

January 2022



Rice Growing Outlook Report

January, 2022

Overview

In the Northern side of SE-Asia, the planting of dry season rice fully starts, excluding North Vietnam which is in the harvesting of winter crops. The total planting area of dry season rice is expected to increase due to enough irrigation water and good weather. The growing is in early growing stage mainly, and the growing condition is generally good.

In the Southern side of SE-Asia (Indonesia), the harvesting of wet season rice has started in this month. The planting area of wet season rice is steadily expanding by the intensive rainfall in the late December to mid-January. The growing condition is good due to enough irrigation water.

Cambodia

The planting of dry season rice reached to 115% of national plan (534 thousand hectares). The growing is in tillering - maturity under good condition due to enough irrigation water and sunshine.

On the other hand, it's concerned about water shortage in the fields far from the irrigation system. Therefore, the Ministry of Agriculture, Forestry and Fisheries has instructed to take measures of water management in ponds, canals, reservoirs to prevent water shortages.

Indonesia

The harvesting of wet season rice started this January is 0.4 million hectares, 2.1% lower than last year. The yield is expected to be slightly good under enough sunlight during growing period.

This January is also the fourth month of planting wet season rice. The accumulated planted area is 4.9 million hectares, 6.9% higher than last wet season, and it is steadily expanding due to the intensive rainfall in the late December to mid-January. The vegetative and the early generative rice of wet season is in a good growing condition due to enough irrigation water. The January precipitation is in a moderate to high level in some places but no caused of damage to rice growing.

Laos

In this month, the dry season rice growing main condition is in seeding stage. The planted area has reached up to 57 thousand hectares, 61 % of the national production plan.

In general, the current rice growing condition is fair and the planting work is slower as compared to last field years because the irrigation water is shortage due to no rainfall. The planted area in this year is expected to decrease slightly.

Myanmar

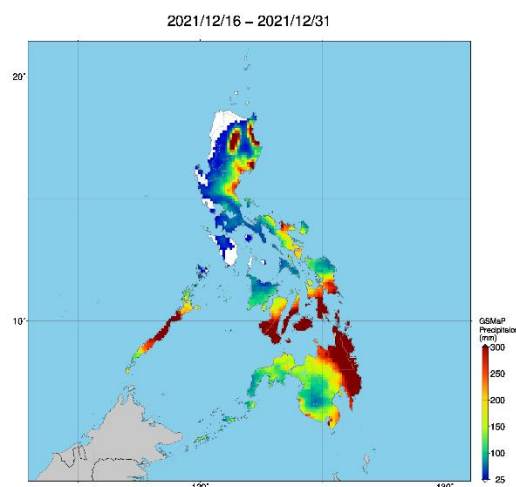
The dry season rice has been planted about 427 thousand hectares accounting for 44% of the national plan of 0.97 million hectares. The planting work is slightly slower as compared to last year. However, it is suggested that the weather may favors the dry season rice in this year.

The current weather is also not interrupting the process of the planting work of the dry season rice. The overall growing condition of the dry season rice is good, and most of the dry season rice is now at early vegetable growth stages.

Philippines

During the period November to December, the dry season rice planted is already in the tillering up to the young panicle forming stage. Due to the occurrence of typhoon “Odette” that brought heavy rains and strong winds, damages in crop have been noted in some provinces of Southern Luzon, Visayas, and Mindanao which resulted to lodging. The damage situation is still under investigation.

Generally, the crop growing condition of dry season rice is fair to good as the major parts of the country are more likely to receive near normal rainfall condition.



Precipitation Map by JASMIN:

Due to the occurrence of typhoon “Odette” that brought heavy rains and strong winds

Thailand

The dry season rice is in the tillering stage mainly. The total planted area is expected to increase because there are enough irrigation water and natural water for the cultivation than last year. Some reservoirs in the North can provide small amount of water, but the farmers expanded the planted area more than dry season water allocation plan. Since the production of last crop was damaged by flood, the farmers are cultivating more rice in this year to reimburse the lost income. Yield is forecast to increase due to sufficient water and favorable weather condition.

Vietnam

In the North of Vietnam, the planting of dry season rice (winter-spring rice) does not start yet because this month is in the sowing time of winter season crops, such as: maize, sweet potatoes, peanuts, and vegetables.

In the South, the harvesting of wet season rice has completed. The average yield is estimated at 5.6 tons per hectare, 2.4% higher than last year due to good weather condition during growing season. On the other hand, the dry season rice (winter-spring rice) is in sowing stage. The current sown area is 1.17 million hectares. In which, the sown area of Mekong River Delta is 1.06 million hectares.