



Rice Growing Outlook Report

.....

December 2022



Rice Growing Outlook Report

December, 2022

Overview

In the Northern side of SE-Asia, the harvesting of wet season rice has almost completed in all countries and regions. This season rice was concerned with production decrease about flood damage by frequent typhoons which caused heavy rains during the harvest season rice, but the damage was minor except for some areas, and the production condition was normal to slightly poor. The dry season rice is in the seeding stage to tillering stage under favorable growing conditions.

In the Southern side of SE-Asia (Indonesia), the harvesting of dry season rice has been completed. The total harvested area slightly increases from last year and the yield condition is good due to enough precipitation during the growing season. While the planted area of wet season rice is steadily expanding due to the intensive rainfall from late November to mid-December.

Cambodia

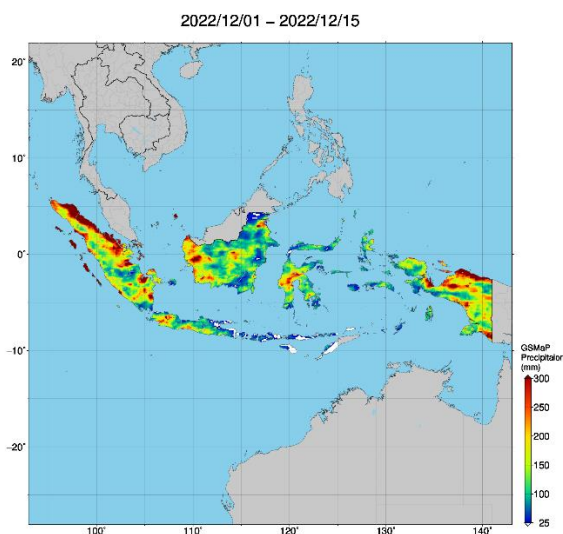
The harvesting of wet season rice has reached 2.3 million hectares, which is 83 percent of the cultivated area. The estimated yield is 3.3 tons per hectare and it slightly decreased compared to last year. While the planting of dry season rice reached up to 73% of the national plan and the main growing stage is in tillering.

Generally, the growing condition of dry season rice is good due to enough sunshine and water supply from the irrigation system.

Indonesia

The harvesting of dry season rice has been completed this month. The total harvested area of dry season rice is 4.4 million hectares, which is 0.6% higher than last year. The yield condition of dry season rice is good than last dry season due to enough precipitation during the growing season.

This December is also the third month of planting wet season rice. The total planted area so far is 3.3 million hectares, and it is steadily expanding due to the intensive rainfall from late November to mid-December. The rainfall caused flooding in several places but not caused significant damage to rice growing.



Precipitation map by JASMIN: The rainfall caused flooding in several places

Laos

The wet season of lowland rice is at the end of the harvesting stage under good yield conditions. The harvesting area has progressed to about 93% of the planted area. The final harvest area is estimated at around 766 thousand hectares. And the total production is expected to be 3.1 million tons. On the other hand, the harvesting of upland rice has been completed. The final harvested area is around 92 thousand hectares and the production is 187 thousand tons, which slightly increased compared to last year.

The national planting plan for dry season rice is approximately 95 thousand hectares, and now it is in land preparation.

Myanmar

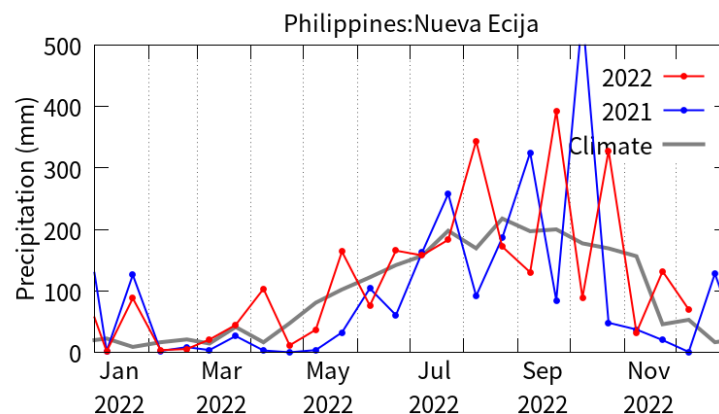
Up to this month, over 3.65 million hectares of wet season rice that account for 60.5% of the total planted area has been harvested. It produced 14.2 million tons of paddy with a yield of 3.9 tons per hectare. The yield is very good and similar to last year. It is expected that the harvesting work would be completed at the end of this month. The weather during this month is not interrupting the harvesting work of the wet season rice.

For dry season rice, the national plan is set as 1.06 million hectares country-wide in this year. Over 100 thousand hectares of dry season rice accounting for 10% of the national plan have been planted mainly in the delta area. Planting work is slightly faster than last year. It is also suggested that the current weather may favor the dry season rice in this year.

Philippines

Wet season rice planted from July to August was fully harvested. Rice production was about 7.31 million metric tons, which decreased by 1.3 percent compared to the same period of the previous year. The decrease in production was due to the occurrence of heavy rains and strong winds brought by the passage of typhoons in the country.

Meanwhile, the dry season rice planted from November to December is in the seeding period. The precipitation index showed that the country is more likely to receive near to above-normal rainfall conditions.



Precipitation time series graph by JASMIN: The occurrence of heavy rains and strong winds brought by the passage of typhoons

Thailand

The harvesting of wet season rice has been completed this month. The production in the Northeastern region was decreased by the flood damage during October. While the production in the Northern and Central regions was fair because some areas were able to harvest the rice before the flood occurred and the non-affected areas benefited from the favorable rainfall. As a result, the total production was down less than 1% from last year.

The dry season rice is in the sowing period. The planted area is forecast to increase than last year due to sufficient irrigation and natural water for cultivation.

Vietnam

In the North, the harvesting of wet season rice is completed. The average yield is estimated at 5.31 tons per hectare, slightly higher than the last year due to many stems by favorable weather conditions during the growing season.

In the South, the other wet season rice (autumn-winter rice and seasonal rice) is still in the harvesting stage. The harvested area reached 0.67 million hectares out of 1.18 million hectares planted. The yield forecasts are higher than last year due to good growing conditions.

On the other hand, in the Mekong River Delta, the dry season rice (winter-spring rice) is in the growing stage with an area of 0.31 million hectares.