



Rice Growing Outlook Report

.....

April 2022



Rice Growing Outlook Report

April, 2022

Overview

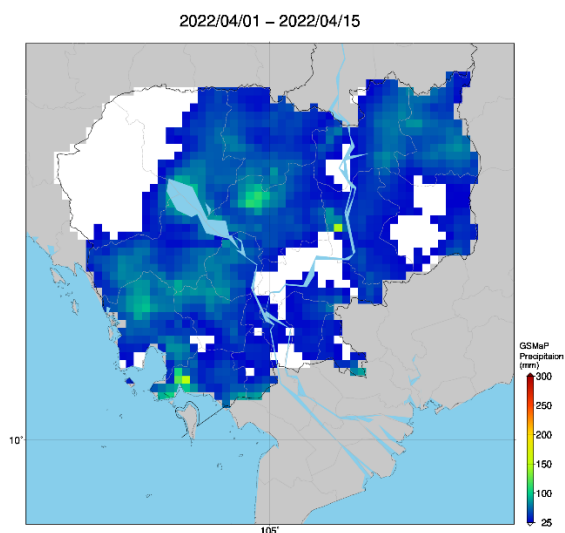
In the Northern side of SE-Asia, April is the peak month of dry season rice harvest. Generally, the yield condition is good due to stable weather condition during growing season, and the final production is expected to increase than normal year. On the other hand, the sowing of wet season rice starts earlier than last year in South Vietnam.

In the Southern side of SE-Asia (Indonesia), the harvesting of wet season rice is progressing faster than last year. The yield is good under enough water and sunlight during growing period. This month is supposed to be the first month of planting the dry season rice, but the planting is just beginning and the area is limited.

Cambodia

The harvesting of dry season rice has almost completed and the yield is estimated 4.6 tons per hectare. In this month, there was rainfall in some regions so that the farmers start to plow their rice field for planting in wet season.

Generally, the growth condition of this dry season rice was good and the final yield increased slightly than last year.



Precipitation Map by JASMIN: there was rainfall in some regions, so that the farmers start to plow their rice field.

Indonesia

This April is the fourth month of harvesting the wet season rice. The total harvested is 4.6 million hectares and is 4.1% higher than last year. The yield is good under enough water and sunlight during growing period.

This April is supposed to be the first month of planting the dry season rice, but the planting is just beginning and the area is limited. This April precipitation is decreasing especially in Java Island, but other parts keep in a moderate to high level. The reduced of rainfall does not caused of damage to rice growing.

Laos

The main growing stage of dry season rice is in harvesting stage. The harvested area has progressed about 29% of the planted area. The final yield of this dry season rice is estimated to increase due to good weather condition during the rice growing season.

In general, the weather of rice growing condition in this month is quite good and the irrigation supply in this season still favors for the rice growth.

Myanmar

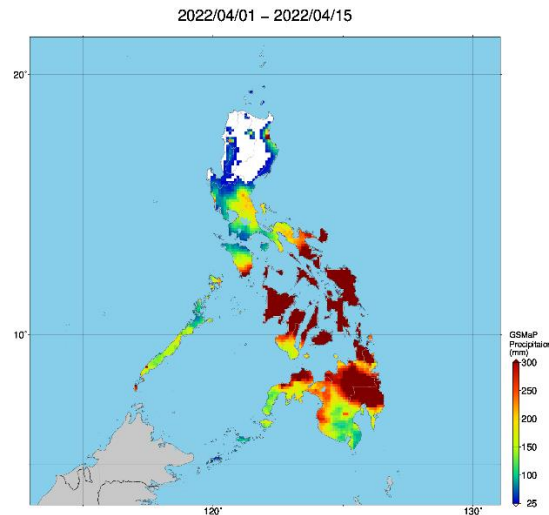
Planting of the dry season rice has been completed with 0.94 million hectares that account for about 97% of the national plan of 0.97 million hectares. Up to this month, 375 thousand hectares of the dry season rice accounting for 40% of the total planted area has been harvested in Myanmar. It produced over 1.8 million tons of paddy, and the yield is 4.82 tons per hectare. It is a good yield and similar to last year.

Cyclone Asani was moving towards the Myanmar coast in this month but there was no direct hit. Although there was heavy rain together with strong wind mainly in Ayeyarwady region and Rakhine state, no significant damage occurred to the dry season rice. The overall growing condition of the dry season rice is still good in this year.

Philippines

Dry season rice planted during the period of November to December is currently in the harvesting stage. More than half of the planted areas have been harvested already. The yield is expected to increase against the same period of the previous year. High precipitation in most parts of the country was noted during the first half of April, but has no caused of serious damage to the rice.

Generally, the crop growing condition of dry season rice in the country is good. Most parts of the country are more likely to experience near to above normal rainfall conditions for the whole month of April.



Precipitation Map by JASMIN: High precipitation was noted during the first half of April.

Thailand

Now, the dry season rice is in the harvesting stage. Rice production is forecasted to increase due to the increase of cultivated area. Although the costs of chemical fertilizers and fuel used for pumping water are raised, the farmers expanded planted area because they expect to gain household income based on high rice transaction price. In this year, there is continuous rainfall throughout the growing season. Consequently, the yield is expected to increase.

Vietnam

In the North of Vietnam, the winter-spring rice (dry season rice) is in the tillering and young panicle forming stages. The yield is forecasted to decrease due to the flood more than 88 thousand hectares by off-season rain in late March and early April 2022 in the North Central region.

In the South, the winter-spring rice (dry season rice) is in the harvesting stage. The harvested area of dry season rice reached 0.86 million hectares out of 1.91 million hectares planted. The yield of harvested rice is 7.1 tons per hectare which is the same as last year.

On the other hand, the sowing of summer-autumn rice (wet season rice) in the Mekong River Delta proceeds at a good pace under stable weather conditions, and it is earlier than last year with the currently sown area of 0.24 million hectares.