



# Rice Growing Outlook Report

## September 2021



## Rice Growing Outlook Report

September, 2021

---

### Overview

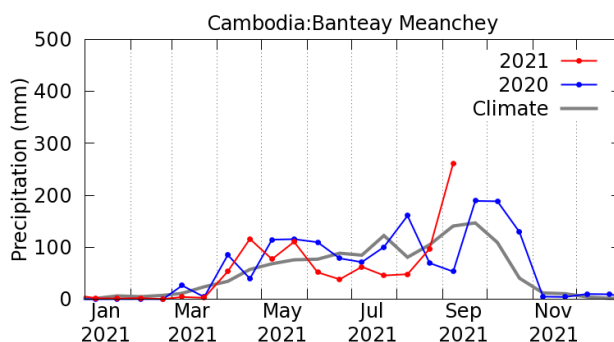
In the Northern side of SE-Asia, the wet season rice is in young panicle forming stage to harvesting stage. And up to this month, the planting of wet season rice has completed in all rear. The planted area this season increased than last year due to entering the early rainy season and enough rainfall. On the other hand, the harvesting of early season rice already is at end stage in some countries. The yield is fair to slightly good without serious natural disasters. Generally, the growing condition of this season rice is estimated to be good due to the forecast of stable weather like normal to above normal rainfall from now on.

In the Southern side of SE-Asia (Indonesia), the dry season rice is in the harvesting stage, and the harvesting progress is delayed than last year. The yield condition is estimated to be slightly good than last year due to enough precipitation during the growing season.

### Cambodia

The planted area of wet season rice reached around 2.77 million hectares, or 106% of the national plan. Although it trended with drought condition this season, enough rain from last month has made the rice to grow well. The areas affected by drought are also on recovering condition.

About 44 percent cultivated area of the early rice was harvested. The yield is estimated to be around 4.00 tons per hectare.



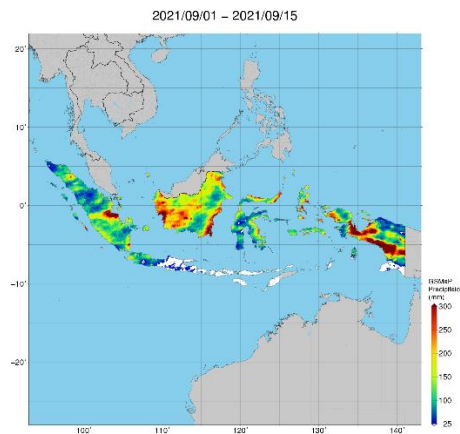
Precipitation Time Serise Graph by JASMIN: enough rain from last month has made the rice to grow well

## Indonesia

This September is usually the last month of planting dry season rice. The planting of dry season rice is 4.4 million hectares and it is 9.9% lower than last dry season. The crop is in the vegetative and generative phases with good growing conditions

This month is also the third month of the dry season rice harvest. The harvest of dry season rice so far is 2.8 million hectares and the progress is delayed than last year. The yield condition of dry season rice is forecasted to be slightly good than last dry season due to enough precipitation during the growing season.

The dry season's rainfall has decreased in the South but still continues in the Northern part with moderate to high levels.



Precipitation Map by JASMIN: the dry season's rainfall has decreased in the South but still continues in the Northern part

## Laos

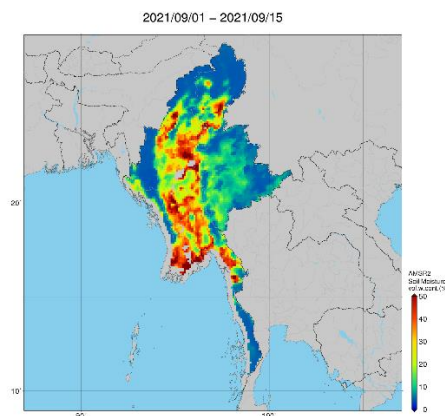
The growing of wet season rice of lowland this month is in the young panicle forming stage to grain filling stage. The weather condition and irrigation water in this season is good for the paddy field. In generally, the final production is expected to be good than the national plan under good weather condition.

On other hand, the upland rice is also in the young panicle forming stage to grain filling stage with the good condition. This rainy season is forecasted to have enough rain.

## Myanmar

Up to this month, the planting of wet season rice has almost completed. As it seems, enough monsoon rain favored the planting work of this season rice and the progress of planting work is slightly faster than last year.

Due to heavy rain occurred during this month, the monsoon floods were caused in most areas. The approximately 15 thousand hectares of the wet season rice have been affected by the floods and about 7 thousand hectares out of the affected areas were damaged. Replanting would be operated for those damaged fields. Most planted wet season rice is now at panicle formation stage.



Soil moisture Map by JASMIN: the monsoon floods were caused in most areas

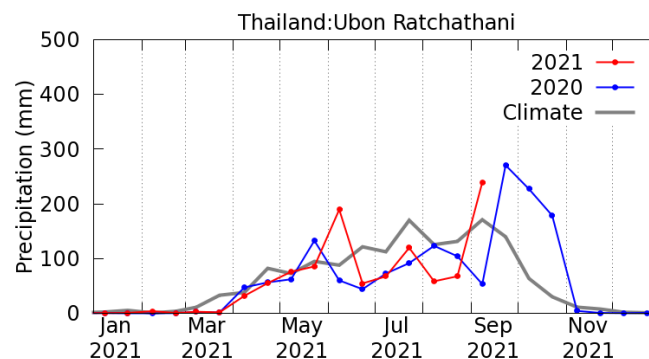
## Philippines

Wet season rice planted in April to May was fully harvested. Production of rice was noted at around 4.17 million metric tons, which was an increase of 1.2% compared to last year's level. The harvested area was about 948 thousand hectares. Wet season rice planted in July to August was in the tillering stage. Low pressure area, tropical cyclone and southwest monsoon rains continue to affect the whole country especially the Luzon and Visayas provinces.

Generally, the crop growing condition of wet season rice is fair to good as most parts of the country is more likely to experience near normal to above normal rainfall condition.

## Thailand

Wet season rice is in young panicle forming stage. The planted area is increased by favorable weather and satisfied paddy price. The growing condition of wet season rice is better than last year, affected by the abundant rainfall from April. On the other hand, there were continuous and heavy rain during the end of August to September in Northern and Northeastern region. Consequently, the rice areas are affected by flood for about 1600 hectares. In addition, In September, most areas are forecasted to have concentrated heavy rainfall. Final yield and production are expected to increase.



Precipitation Time Serise Graph by JASMIN: there were continuous and heavy rain during the end of August to September in Northern and Northeastern

## Vietnam

In the North, the wet season rice is in the young panicle forming to grain filling stages. The rice-growing condition is good due to better irrigation preparation.

In the South, the summer-autumn rice (main wet season rice) is in the harvesting stage. The harvested area reached 1.02 million hectares out of 1.77 million hectares planted. The yield is slightly good than last year due to enough irrigation water. In addition, the other wet season rice (autumn-winter rice and seasonal rice) is in the seeding, tillering, and young panicle forming stages under good growing condition.