



# Rice Growing Outlook Report

## October 2021



## **Rice Growing Outlook Report**

**October, 2021**

---

### **Overview**

In the Northern side of SE-Asia, the wet season rice is in grain filling to harvesting stage. From late September to early October, heavy rainfall continued due to the effects of developed tropical cyclones, and it caused flood damage to wet season rice during grain filling stage in wide area of Cambodia, Myanmar, Thailand, and Philippines. The yield of wet season rice which was harvested before this heavy rain is expected to be fair generally, but there are concerns toward the reduction of final production due to this flood damage.

In the Southern side of SE-Asia (Indonesia), this month is the harvest peak month of dry season rice. The yield condition of dry season rice is forecasted to be slightly good than last dry season due to enough precipitation. On the other hand, the planting wet season rice has started under good condition, but the progress delays than last year.

### **Cambodia**

The planted area of wet season rice reached 110 percent of national plan. In late September, the Northern region and lowland area of Mekong basin were hit by heavy rain and flooded. Around 1.8 percent of cultivated area was affected by flood and the yield is estimated to decrease slightly due to the influence of flood.

About 57 percent cultivated area of the early rice was harvested. The yield is around 4.00 tons per hectare and expected to be fair yield.

### **Indonesia**

This October is the first month of planting wet season rice, but the progress delays than last year and the planted area is still limited. The crop is in the vegetative phases with good growing conditions.

This month is also the fourth month of the dry season rice harvest. The harvested area of dry season rice so far is 3.5 million hectares. The yield condition of dry season rice is forecasted to be slightly good than last dry season due to enough precipitation during the growing season.

The October's rainfall has decreased in the South but still continues in the Northern part with moderate to high levels.

## **Laos**

Wet season rice of lowland is in grain filling stage to early harvesting stage. Final planted area is 780 thousand hectares, 101 percent of the national production plan. The harvesting has completed about 11 percent of the planted area. The first half of this month, some areas in the North have affected by heavy rain, but no damage area report.

The upland rice is also in grain filling stage to early harvesting stage. The harvested area reached approximately 23 percent of planted area and under good condition. The final production is estimated to be good than the national production plan.

## **Myanmar**

The planting of wet season rice has closed with 6.01 million hectares accounting for 98.6 percent of the national plan. In this month, the growing stages on average is in tillering to panicle formation stage.

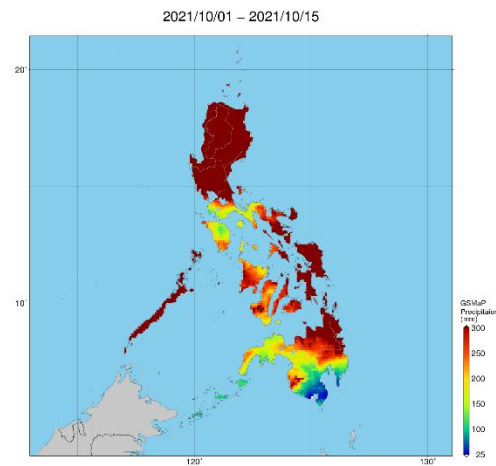
Monsoon flood due to heavy rain occurred in this month in most areas. It affected almost 23 thousand hectares of the wet season rice and over 12 thousand hectares were damaged. Replanting has been done for 7,400 hectares of the wet season rice. The rest of the damaged areas would be grown winter crops in line with respective cropping patterns.

The overall growing condition of the wet season rice is good although there are concerns with the effects of wide floods.

## **Philippines**

Wet season rice planted in July to August is in heading to flowering stage. Tropical cyclones enhanced the Southwest monsoon which brought moderate to heavy rainfall in most parts of Luzon and Western Visayas from September up to second week of October. Now the government is continuously assessing and validating damages and losses in the rice areas.

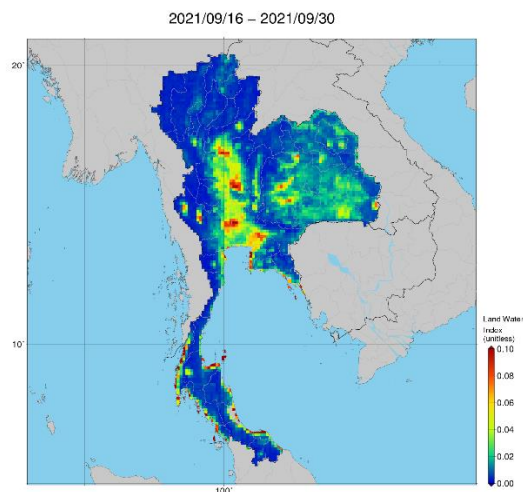
Generally, the crop growing condition of wet season rice is fair to slightly poor in most provinces of the country. Near to above normal rainfall conditions is more likely to receive in most parts of the country for the remainder of the month.



Precipitation Map by JASMIN: Tropical cyclones enhanced the Southwest monsoon which brought moderate to heavy rainfall in most parts of Luzon and Western Visayas

## Thailand

Currently, wet season rice is in the grain filling stage. There are excess rainfall and widespread floods in all regions causing by Tropical Cyclone Dianmu since 23 September 2021. The rice fields in 33 provinces were damaged. The damaged areas of the rice field are forecasted to be as high as 4 percent of the total planted area (about 400,000 hectares). Consequently, the wet season rice has grown steadily under stable weather condition, but this flood damage is concerned to cause the reduction of total rice production in this year.



Land water index Map by JASMIN: The damaged areas of the rice field are forecasted to be as high as 4 percent of the total planted area

## **Vietnam**

In the North, the wet season rice is in the grain filling stage, and some provinces start to harvest. The yield is estimated about 5.3 tons per hectares, the same yield last year.

In the South, the harvesting of summer-autumn rice (main wet season rice) is completed. The average yield estimates at 5.65 tons per hectare, 2.2 percent higher than the last year due to proper rainfall condition. In addition, the other wet season rice (autumn-winter rice and seasonal rice) is in the young panicle forming to harvesting stages. The yield forecasts higher than last year.