



# Rice Growing Outlook Report

## November 2021



## **Rice Growing Outlook Report**

**November, 2021**

---

### **Overview**

In the Northern side of SE-Asia, the wet season rice is in harvesting stage. And some countries has almost completed. The heavy rainfall by developed tropical cyclones in October caused flood damage to wet season rice during grain filling stage in wide area of Cambodia, Myanmar, Thailand, and Philippines. This flood damage has caused more than minor damage, and the final yield is also estimated to reduce. The yield in areas that were not flooded are expected to be good. On the other hand, the planting of dry season rice has started in Cambodia and South Vietnam under good condition due to enough irrigation water.

In the Southern side of SE-Asia (Indonesia), the harvest of dry-season rice is nearing the end, but it's delayed than usual. The yield condition is forecasted to be slightly good than last dry season due to enough precipitation during the growing season. On the other hand, the planting of wet season is still low level, but the growing condition is good due to enough precipitation.

### **Cambodia**

The harvesting of wet season rice has almost completed with 3.5 tons per hectare of average yield. It slightly decreases from last year due to heavy rain and flood at late stage of growing. While the planting of dry season rice has started for around 16 % of the national plan (462 thousand hectares). The growing is in sowing stage-tillering. Generally, the growing condition of dry season rice is good due to enough irrigation water.

### **Indonesia**

This November is the second month of planting wet season rice. The planted area of the wet season rice reached to 0.8 million hectares and it is 38.2% lower than the last season. The crops is in the vegetative and generative phases with good growing conditions.

This month is also the fifth month of the dry season rice harvest. The harvest of dry season rice so far is 4.1 million hectares and the progress is 9.6% lower than last year. The yield condition is forecasted to be slightly good than last dry season due to enough precipitation

during the growing season. The beginning of wet season's rainfall has increased in most areas. Some areas are flooded but didn't cause any damage.

## **Laos**

The wet season rice is nearly at the end of harvesting stage. The harvested area of lowland rice has progressed to about 570 thousand hectares. The final harvested area is estimated around 780 thousand hectares, and it slightly increases comparing to last year due to the increase of planted area. The yield is expected to be 4.3 tons per hectare due to good weather condition, and the total production is estimated to be around 3.3 million tons which would be more than last year.

On the other hand, the final harvested area of upland rice is estimated around 100 thousand hectares and the production is estimated around 200 thousand tons.

The national planting plan of dry season rice in 2021 season is approximately 93 thousand hectares, and now it is in land preparation.

## **Myanmar**

The planting of wet season rice for this year has been completed with 6.07 million hectares. The growing stages on average is in panicle formation stage to heading stage. Over 580 thousand hectares have been harvested and produced about 2.2 million tons of paddy with a yield of 3.79 tons per hectares. The yield is good, and it is very similar to last year.

In this month, monsoon flood due to heavy rain occurred in few areas. It affected over 31 thousand hectares of the wet season rice, and about 14 thousand hectares were damaged. Replanting has been done for 8,200 hectares of the wet season rice. The rest of the damaged areas would be grown winter crops in line with respective cropping patterns. However, the overall growing condition of the wet season rice is good.

## **Philippines**

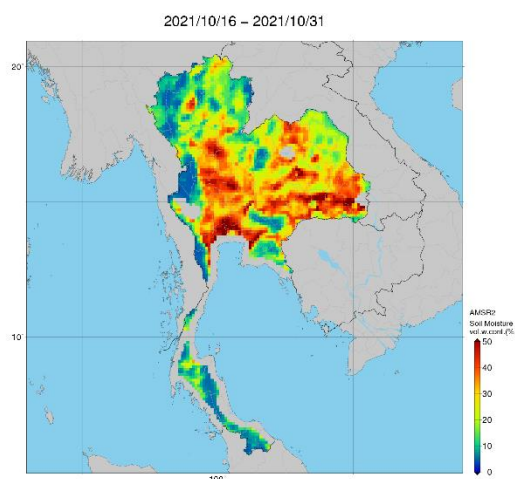
Wet season rice planted in July to August is in the maturing to harvesting stage. Approximately 87 thousand metric tons were spoiled by Severe Tropical Storm "Maring" that enhanced the Southwest monsoon which brought moderate to heavy rainfall in Northern parts of Luzon in October.

Generally, the crop growing condition of wet season rice is slightly poor in some provinces of the country. Rainfall condition for the remainder of the month is more likely to receive near to above normal rainfall.

## Thailand

The wet season rice is in the harvesting period. The harvesting work is going well with no rainfall. The production in the Northern and Northeastern regions are forecasted to decrease by floods during October. While rice fields in the non-affected areas will be benefited from the favorable rainfall. However, the damage of flooding areas is quite large, causing the production of the whole country to be reduced.

The dry season rice is in the land preparation period. Planted area is forecasted to increase from last year due to sufficient of water supply from irrigation systems and national resources.



Soil Moisture Map by JASMIN: the damage of flooding areas is quite large

## Vietnam

In the North, the wet season rice is in the harvesting stage with the area of 0.81 million hectares. The yield is estimated to be about 5.3 tons per hectare, 0.2% higher than the last year due to many stems by favorable weather conditions during growing season.

In the South, the other wet season rice (autumn-winter rice and seasonal rice) is in the harvesting stage with a total harvested area of 0.45 million hectares. The yield is forecasted to be higher than last year due to good growing condition.

On the other hand, some provinces (mainly in the Mekong Delta) start the sowing of dry season rice (winter – spring season) with 0.21 million hectares under good condition.