



# Rice Growing Outlook Report

**March 2021**



## **Rice Growing Outlook Report**

**March, 2021**

---

### **Overview**

In the Northern side of SE-Asia, the harvesting of dry season rice has started in some countries and areas. Generally, this growing season was in the shortage condition of irrigation water, which affected the reduction of planted area and concern of growing condition. However, the current yield of harvested rice is generally good. In South Vietnam, the sowing of wet season rice has started earlier than usual.

In the Southern side of SE-Asia (Indonesia), the harvesting of wet season rice is progressing steadily. The yield is forecasted to be slightly poor due to drought condition during growing season. The flood was reported that it occurred in Kalimantan, and it damaged 62% of planted areas in Kalimantan.

### **Cambodia**

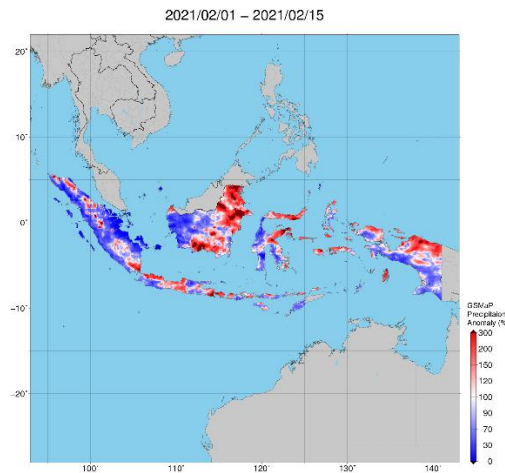
The final planted area of dry season rice reached up to 649 thousand hectares. It increased around 9% compared with last year due to enough water supply and high price of rice. The harvesting of dry season rice has completed 61% of the total planted area.

Generally, the yield condition of dry season rice is good, and the average yield is 4.36 tons per hectare which slightly increases than last year.

### **Indonesia**

The prospect of harvesting wet season rice in March is 1.6 million hectares, and it is 60.6% higher than last year. The yield is forecasted slightly lower than last year due to drought condition since November 2020.

Generally, this March is the last month of planting wet season rice, but the planted area is still low as it is not yet completed. The high rainfall still continues in some regions but no reporting of flooding with the exception of South Kalimantan. The damage to rice crops caused by South Kalimantan flooding is recorded about 56.7 thousand hectares, 38% of planted area.



Precipitation Anomaly Map by JASMIN: The damage to rice crops caused by South Kalimantan flooding.

## Laos

The main growing condition of dry season rice is in tillering stage and young panicle forming stage. The planted area is expected to remain at 83 thousand hectares. The planted area in this year is slightly lower than the national production plan due to less rainfall and natural water resources.

The rice growing condition in this month is quite good, and the weather condition in this season is still favorable for the rice growth.

## Myanmar

Up to March 2021 in Myanmar, planting of the dry season rice is nearly completed with 816 thousand hectares that account for 75.3% of the national plan (1.08 million hectares). The progress of planting work is slightly lower than last year. The remaining areas of plan for the dry season rice may not be planted due to limited irrigation water. The overall growing condition of the dry season is good, and the weather still favors the growth of rice. Most of the growing stage is in reproductive stages.

## Philippines

Dry season rice planted during the period of November – December is currently in the maturing up to harvesting stage. Multiple weather systems affected the country, including the passage of Tropical Storm “Auring” during the second half of February. Affected areas were noted in some provinces of Visayas and Mindanao about 4.7 thousand hectares. Despite these, rice production is projected to be fine as some areas have been harvested prior to the occurrence of the said Tropical Storm.

Generally, the crop growing condition of dry season rice is good as most regions of the country are more likely to experience good weather condition for the remainder of the month.

## Thailand

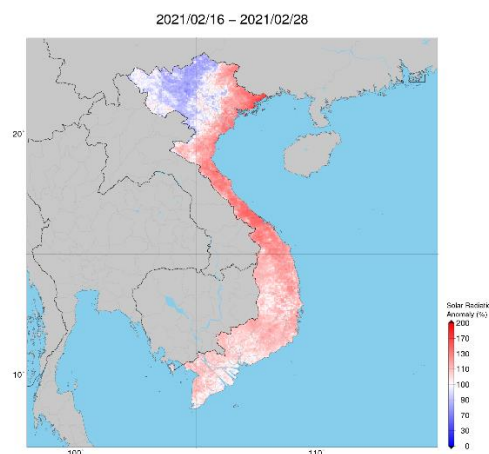
The dry season rice is in the grain filling stage and harvesting stage. Eventually, the planted area increased more than last year due to high rice prices. The farmers in some areas grow the rice more than irrigation plan, and they try to seek water from irrigation canal and river. The growing condition is not good because of the shortage of irrigation water during the growing stage.

## Vietnam

In the North of Vietnam, the winter-spring rice (dry season rice) is in early growing stage. The total sown area is 0.82 million hectares. The growing condition is good due to warm weather and better irrigation preparation.

In the South, the winter-spring rice (dry season rice) is in harvesting stage. The harvested area of dry season rice reached 0.27 million hectares out of 1.9 million hectares planted. The yield of harvested rice is 6.39 tons per hectare.

On the other hand, the summer-autumn rice (wet season rice) starts to sow in the Mekong River Delta.



Solar Radiation Anomaly Map by JASMIN:

In the North of Vietnam, the growing condition is good due to warm weather.