



Rice Growing Outlook Report

June 2021



Rice Growing Outlook Report

June, 2021

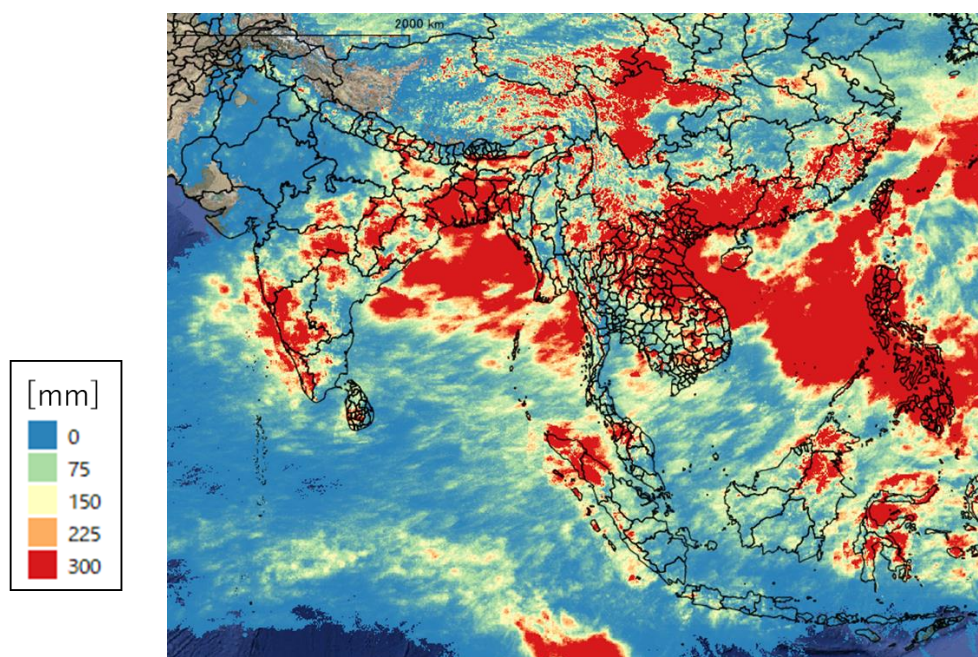
Overview

In the Northern side of SE-Asia, the harvesting of dry season rice has almost completed in all countries and regions.

The wet season rice is in seeding to tillering stage. Farmers could start planting earlier than last year because the rainy season started earlier than usual. The growing condition is generally good under enough rainfall. During the first week of June, Philippines was hit by Typhoon “Dante”.

In the Southern side of SE-Asia (Indonesia), the wet season rice harvest is expected to be completed this month, with the total harvested is 5.9 million hectares and 1.3% higher than last year, while the yield is forecasted to be slightly lower than last year. On the other hand, the planting condition of dry season rice is still low due to the continuous cropping of wet season rice.

Precipitation condition in early of June



This map is provided by Indian Space Research Organisation (ISRO) under the APRSAF/SAFE agromet project

<https://www.eorc.jaxa.jp/SAFE/project/agromet>

Cambodia

The planted area of wet season rice has progressed to around 1.67 million hectares, which is 64% of the national planting plan. The growth is in tillering to early young panicle forming stage.

Generally, the growing condition of early wet season rice is good in the most provinces. This season rice is under enough rainfall and sunlight nationwide.

Indonesia

The wet season rice harvest is expected to be completed this month, with the total harvested is 5.9 million hectares and 1.3% higher than last year, while the yield is forecasted to be slightly lower than last year due to the less precipitation during the growing season.

This June is also the third month of planting dry season rice. On the other hand, the planting condition is still low due to the continuous cropping of wet season rice with the increase of rainfall, and also farmers are still preparing the land after harvesting the wet season rice. There are no reports of significant damage nationwide.

Laos

The wet season rice for lowland is in land preparation and seeding stage. The national planting plan is approximately 770 thousand hectares, slightly more than previous year, and the production is expected around 3 million tons. The planting work until now has progressed to approximately 212 thousand hectares. The weather condition and irrigation water supply in this month is good for the paddy in early growing stage.

The planting plan for upland rice is approximately 100 thousand hectares with the production around 180 thousand tons. The upland rice is in seeding and tillering stage.

Myanmar

Harvesting of the dry season rice is almost completed with 816 thousand hectares that account for 88.6% of the total planted area (920 thousand hectares). It produced 3.94 million tons of paddy with a yield of 4.83 tons per hectare. In this year, the yield is good and also similar to last year, but the harvested area decreased about 18% than last year due to lack of irrigation water in planting season. The weather of this month reflects the monsoon rain frequently together with strong wind. It does not have any adverse effect on the harvest of the dry season rice.

National plan for the planting area of wet season rice is set as 6.09 million hectares in this year. The planting of the wet season rice has started and been done 136 thousand hectares. The planting work of the wet season is slow but similar to last year. The overall growing condition is expected that the monsoon rain may promote the planting work and the growth of the wet season rice.

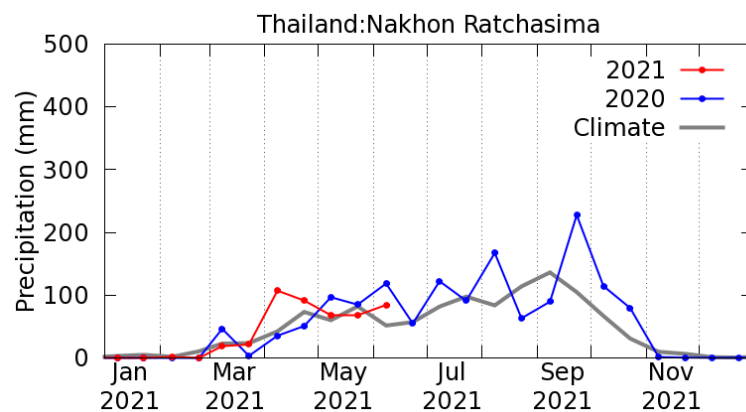
Philippines

Wet season rice planted in April to May is in the tillering to young panicle forming stage. During the first week of June, the country was hit by Typhoon “Dante”. Most areas in Visayas and Mindanao have experienced near to above normal rainfall conditions.

The current growing condition of wet season rice is a concern due to the typhoon. However, the growing condition is expected to improve because most parts of the country are likely to experience near normal rainfall condition after this.

Thailand

Wet season rice is in the time of sowing and early tillering stage. Farmers can start planting earlier than last year because it has been raining since early April. The wet season rice fields are forecasted to expand in this year due to favorable weather, and the satisfied paddy price from the last year encourages the farmers to expand their fields as well. The paddy yield is expected to increase than last year which was suffered by drought. Besides, the total rainfall of the whole country during this rainy season is estimated to be sufficient for rice cultivation.



Precipitation of Nakhon Ratchasima by JASMIN: It has been raining since early April

Vietnam

In the North, the winter-spring rice (dry season rice) is in the harvesting stage with the area of 0.385 million hectares. The yield is estimated about 6.3 tons per hectare, 0.3% higher than the last year due to warm weather and better irrigation preparation. In addition, the sowing of summer-autumn rice (wet season rice) has just started.

In the South, the summer-autumn rice (wet season rice) is in seeding and tillering stages. The current sown area has reached 0.9 million hectares. The rice growing condition is normal under proper rainfall condition.