



Rice Growing Outlook Report

July 2021



Rice Growing Outlook Report

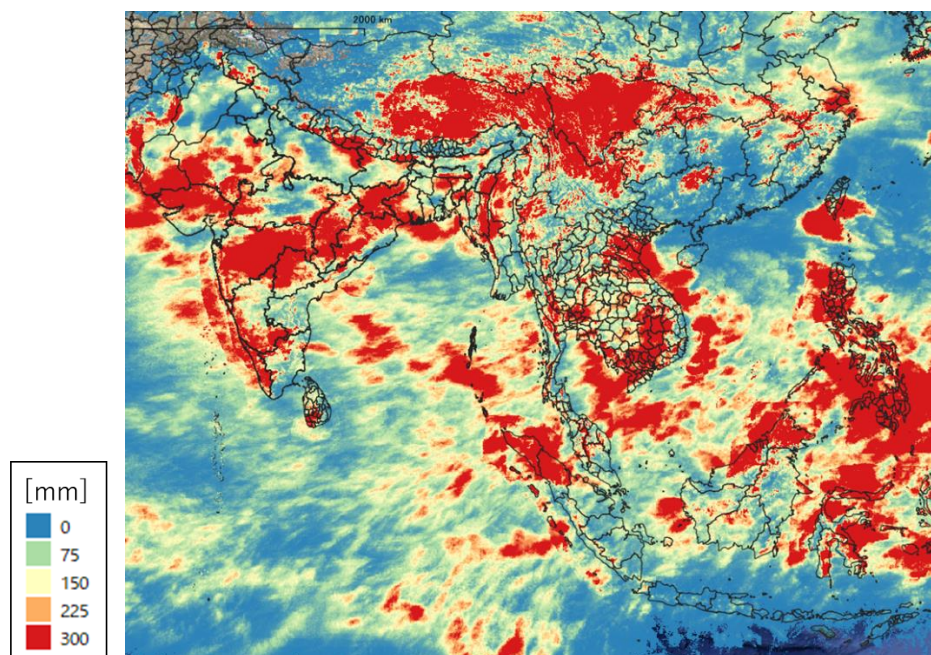
July, 2021

Overview

In the Northern side of SE-Asia, the wet season rice is in tillering to grain filling stage mainly. And the early season rice already starts to harvest in some areas. The final planted area is expected to increase slightly than previous year under stable weather condition. The growing condition is generally good due to proper rainfall for growth, although there are concerns about the effects of droughts and floods in some areas.

In the Southern side of SE-Asia (Indonesia), the growing condition of dry season rice is generally good under proper rainfall, but the planting condition is still low. On the other hand, the early harvesting already started from this month.

Precipitation condition in early of July

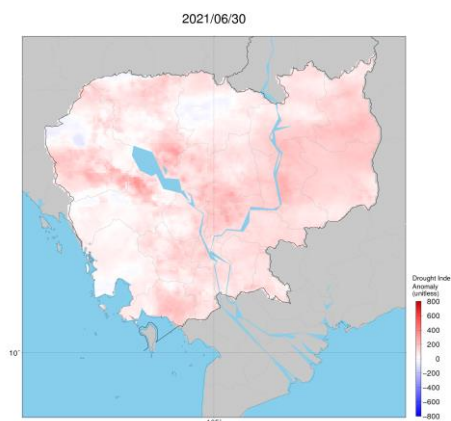


This map is provided by Indian Space Research Organisation (ISRO) under the APRSAF/SAFE agromet project

<https://www.eorc.jaxa.jp/SAFE/project/agromet>

Cambodia

The wet season rice is in flowering to grain filling stage, and some fields start the harvesting. While the planted area of wet season rice reached around 2.26 million hectares, or 87% of national plan. In general, the rainfall is plumbing well in beginning rainy season that why the planted seem to be faster than last year. However, there is a tendency for less rainfall this month and drought was occurring of the North-west of country. The drought affected area on paddy rice reaches to 1.4% of planted area.



Drought index Anomaly Map by JASMIN: there is a tendency for less rainfall this month and drought was occurring of the North-west of country

Indonesia

This July is the fourth month of planting dry season rice. The planting condition is still low because farmers are still preparing the land after harvesting the wet season rice. The growing condition of early growth is generally good under rainfall in late June. On the other hand, the early harvesting already started from this month and it reached to 0.9 million hectares. There are no reports of significant damage due to drought nationally.

Laos

The wet season rice of lowland is in tillering stage to young panicle forming stage. The planting work has almost completed until end of June and the planted area has progressed to 780 thousand hectares or 101% of the national production plan. In generally, the weather condition and irrigation water supply in this month is good for the paddy in early growing stage. Some provinces at the north region have affected by flood due to heavy rain in first half of June, but no damage has been reported. On other hand, the upland rice is in young panicle forming stage. The planted area is about 104 thousand hectares.

Myanmar

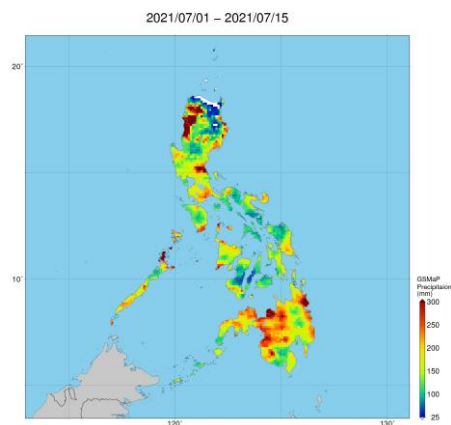
Up to July 2021, planting of wet season rice has been done about 1.6 million hectares accounting for 26% of the national plan which is set as 6.09 million hectares. Particularly, the main production area of wet season rice is lower Myanmar region, which occupies more than half of the total planted area.

The monsoon weather favored the planting work of the wet season rice, and any significant flood and damaged did not occur in all region and states. Thus, the planting progress is slightly faster as compared to that of last year. Most of the planted wet season rice is now at tillering stage.

Philippines

Wet season rice planted in April - May is currently in the maturing stage. The country experienced good weather condition during the second half of June until first half of July. Although some provinces in the northern part of the country experienced a tropical depression on the first week of July that brought significant rainfall but no damage has been reported.

Generally, the crop growing condition of wet season rice is good under stable weather condition.



Precipitation Map by JASMIN: Some provinces in the northern part of the country experienced a tropical depression on the first week of July that brought significant rainfall

Thailand

Wet season rice is now in the tillering stage. The planting area is forecasted to expand due to favorable weather and high paddy price. In addition, farmers expect government to implement further income insurance program for wet season rice in this year. The growing condition is better than last year due to sufficient rainfall for cultivating during April to July. This season rice production is predicted to increase than last year.

Vietnam

In the North, the harvesting of winter-spring rice (dry season rice) is completed. The average yield is estimated at 6.43 tons per hectare, 2% higher than last year due to warm weather and better irrigation preparation. The total production is estimated 6.9 million tons. In addition, the wet season rice (summer-autumn rice) is in seeding and tillering stages. The rice growing condition is good due to better irrigation preparation.

In the South, the summer-autumn rice (wet season rice) is in Young panicle forming to Grain filling stages. The early wet season rice of Mekong River Delta already starts to harvest. On other hand, the sowing of other wet season rice (autumn-winter rice) starts in this month.