



Rice Growing Outlook Report

January 2021



Rice Growing Outlook Report

January, 2021

Overview

In the Northern side of SE-Asia, the planting of dry season rice fully starts excluding North Vietnam which is in the harvesting of winter crops. The total planting area of dry season rice is expected to decrease slightly due to some countries are short of irrigation water this season. The growing is in early growing stage mainly, and the condition is generally good under stable weather condition.

In the Southern side of SE-Asia (Indonesia), the harvesting of wet season rice has started in this month. The planting area of wet season rice is steadily expanding by the intensive rainfall. The growing condition is good due to enough irrigation water.

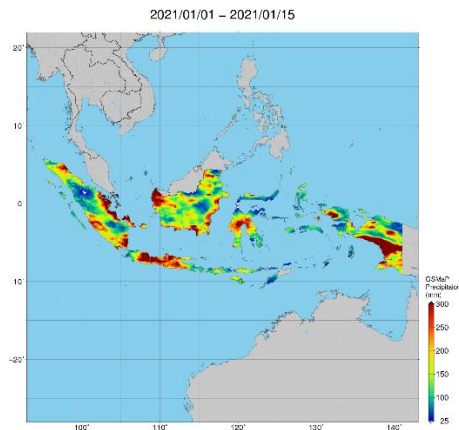
Cambodia

The planting of dry season rice reached up to 125% of national planting plan of 571 thousand hectares due to the government support to supply water for water shortage areas from irrigation system. In addition, some areas have already started the harvesting. Generally, the growing condition of dry season rice is good.

Indonesia

The harvesting of wet season rice started this January which is planted about 0.4 million hectares, 11.8% higher than last year. The yield is expected to be average under enough sunlight during growing period.

This January is the fourth month of planting wet season rice. The planted area in this month is 0.9 million hectares, and it is steadily expanding due to the intensive rainfall in the late December to mid-January. The early generative rice of wet season is in a good growing condition due to enough irrigation water especially in the North of Java Island. The January precipitation is in a moderate to high level in several places but no cause of significant damage to rice growing.



Precipitation Map by JASMIN:

The planted area is steadily expanding due to the intensive rainfall in the late December to mid-January

Laos

The national planting plan of dry season rice in 2020 - 2021 is approximately 91.5 thousand hectares, and the production is expected to be around 417.9 thousand tons.

In this month the planted area of dry season rice is up to 47 thousand hectares, 52 % of the national production plan. The weather condition and irrigation supply in this month is quite good.

Myanmar

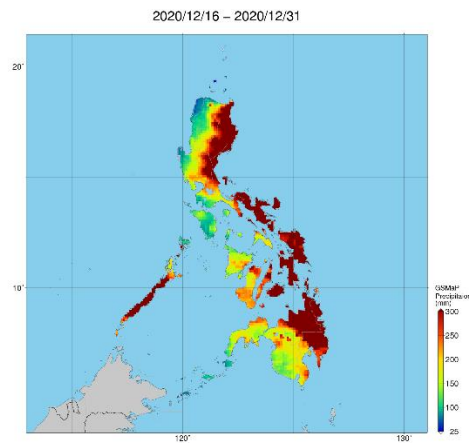
Up to January 2021, the dry season rice has been planted 434 thousand hectares that account for about 47.4% of the national plan of 1.08 million hectares. The progress of planting work is slightly faster than last year. However, because of scarcity of stored water in the dams and reservoirs in this year, it is expected that the planting area of dry season rice would be reduced considerably, and the areas may be substituted by other winter crops depending on availability of irrigation water.

The overall growing condition of the dry season is good. The weather still favors on the growth rice, and most of the dry season rice is now at early vegetative growth stages.

Philippines

Dry season rice planted in November – December is already in tillering to young panicle forming stage. Southern regions of the country were affected by Tropical Storm “Vicky” that brought heavy rains during the third week of December. However, it did not heavily affect the rice growing.

Generally, the crop growing condition of dry season rice is good as most provinces will likely experience above normal rainfall condition.

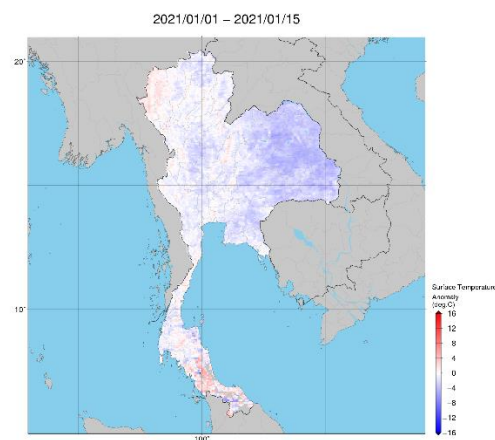


Precipitation Map by JASMIN:

Southern regions were affected by Tropical Storm “Vicky” that brought heavy rains

Thailand

Thailand dry season rice is in the tillering stage. The planted area is expected to slightly decrease because natural water resources and amount of water in the irrigation system are less than last year. Long range of cold weather during December 2020 and January 2021 led to some areas having problems of pest damage, slow growing and less tillering. Yield per Rai is forecasted to reduce due to farmers growing rice exceeding the irrigation water support plan and unable to find water to support their fields.



Temperature anomaly Map by JASMIN:

Long range of cold weather continued during December to January

Vietnam

In the North of Vietnam, the dry season rice (winter-spring rice) does not start yet because this month is in the harvesting time of winter season crops, such as: maize, sweet potatoes, peanuts, and vegetables.

In the South, the dry season rice (winter-spring rice) is in sowing stage. The current sown area is 1.24 million hectares. The sowing is slower than last year due to the delay in agricultural work and shortage of irrigation water.