



Rice Growing Outlook Report

December 2021



Rice Growing Outlook Report

December, 2021

Overview

In the Northern side of SE-Asia, the harvesting of wet season rice has almost completed. The yield condition is fair to slightly poor due to the flood damage just before harvest. On the other hand, the dry season rice is in seeding to tillering stage under good growing condition due to sufficient irrigation water.

In the Southern side of SE-Asia (Indonesia), the harvest of dry-season rice has almost completed. The yield condition is slightly good due to enough precipitation during the growing season. On the other hand, the planting of wet season is going well. The crops is in the vegetative and generative phases with good growing conditions.

Cambodia

The planting of dry season rice reached up to 77% of national plan (462 thousand hectares) and the growing is in tillering stage. Generally, the growing condition is good due to enough sunshine and irrigation water supply.

While, it's concerned about water shortage in the fields far from the irrigation system.

Indonesia

This December is the third month of planting wet season rice. The planting of wet season rice is 3.3 million hectares and it is 8.0% higher than last wet season. The crops is in the vegetative and generative phases with good growing conditions.

The harvest of dry season rice so far is 4.5 million hectares and almost completed. The yield condition of dry season rice is slightly good than last dry season due to enough precipitation during the growing season. The wet season's rainfall has increased in most areas, some areas are flooded but didn't cause any damage.

Laos

The harvesting of wet season rice has completed under good condition. The final harvested area is around 780 thousand hectares and production slightly increased comparing to last year due to the increase of planted area.

The planting of dry season rice has started in this month and progressed up to 21 thousand hectares with 22 % of the national production plan (93 thousand hectares). The weather condition and irrigation supply in this month is quite good, and the rice growing is mainly in seeding stage.

Myanmar

Up to this month, over 3.4 million hectares of wet season rice that accounted for 56.1% of the total planted has been harvested. It produced 13.1 million tons of paddy with the yield of 3.84 tons per hectare. It is expected that the almost harvesting work would be completed in this year.

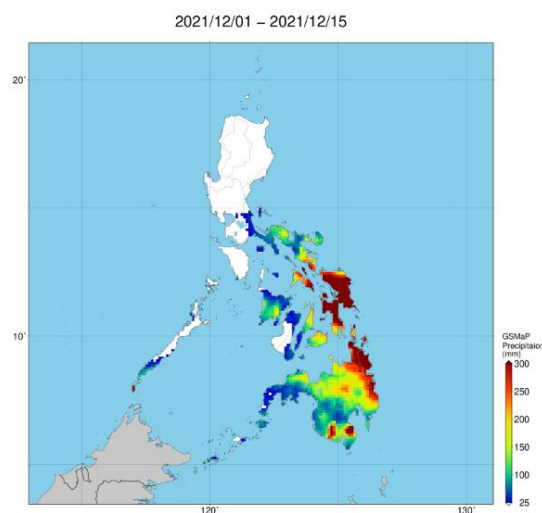
The current weather is not interrupting the process of harvesting the wet season rice. However, the final average yield seems to be slightly lower than the current yield because less irrigation and low rainfall during reproductive stages occurred mainly in middle Myanmar.

For dry season rice in this year, the national plan is set as 0.97 million hectares country-wide. In this month, over 88 thousand hectares of the dry season rice accounting for only 9% of the national plan have been planted mainly in delta areas. Planting work is a bit faster than last year. It is suggested that the weather may favor the dry season rice in this year.

Philippines

Wet season rice planted during the July to August period was fully harvested. Production was about 7.32 million metric tons with a yield of 4.07 metric tons. The yield of wet season rice in the country was slightly poor in some provinces due to strong winds and flooding brought by typhoons and habagat, and affected by the infestation of pests during reproductive stage.

On the other hand, dry season rice planted in November to December is in seeding stage. Precipitation index showed that the country is more likely to receive near normal to above normal rainfall condition in most parts of Luzon and Visayas regions.



JASMIN Precipitation map: Mid-December Typhoon (Rai) passed through southern Philippines

Thailand

The harvesting period of wet season rice has completed in this month. The production in Northern and Northeastern regions was decreased by floods damage during October. While the production in the central region was fair because, in some areas, the farmers were able to harvest the rice before the flood has occurred. Also, the non-affected areas were benefited from the favorable rainfall. The total production reduced about 1.5% from last year.

The dry season rice is in the sowing period. Planted area is forecasted to increase from last year due to sufficient irrigation water and natural water for the cultivation. However, the planting area in the North will be limited in expansion due to small amount of water in the reservoir for some areas.

Vietnam

In the North, the harvesting of wet season rice is completed. The average yield is estimated at 5.26 tons per hectare, 0.8% higher than the last year due to many stems by favorable weather conditions during growing season.

In the South, the other wet season rice (autumn-winter rice and seasonal rice) is still in the harvesting stage. The harvested area reached 0.93 million hectares out of 1.19 million hectares planted. The yield is forecasted to be higher than last year due to good growing condition.

On the other hand, in the Mekong River Delta, the dry season rice (winter-spring rice) which planted 0.43 million hectares is in growing stage. The sowing is faster than last year due to the faster harvest of wet season.