



Rice Growing Outlook Report

August 2021



Rice Growing Outlook Report

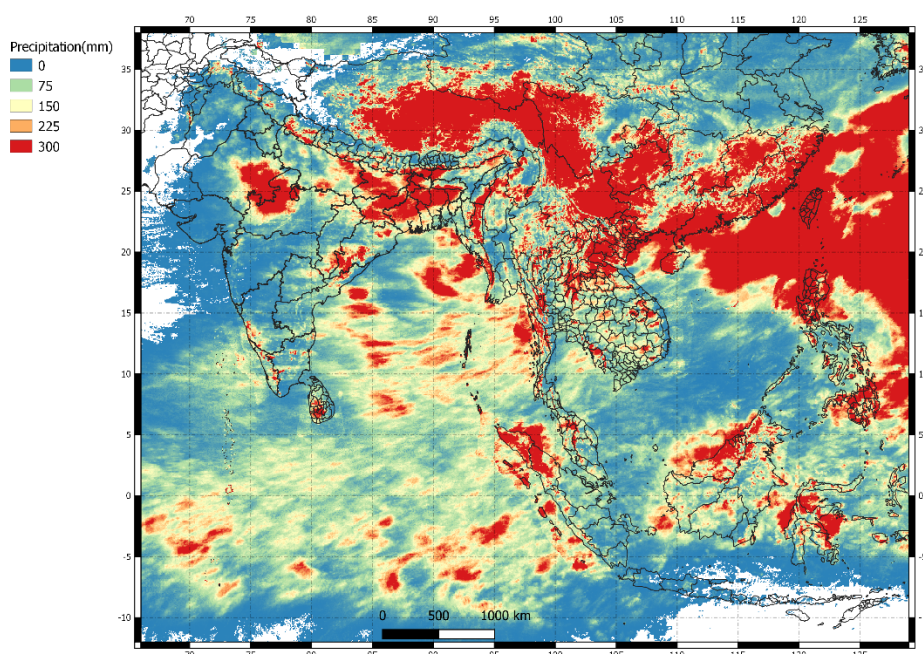
August, 2021

Overview

In the Northern side of SE-Asia, the wet season rice is in tillering to harvesting stage. And the early season rice already starts to harvest in Cambodia, Philippines and South Vietnam. The growing condition is generally good due to proper rainfall for growth. Drought and flood damage to the rice field has been reported in some countries, but the damage level is minor.

In the Southern side of SE-Asia (Indonesia), the dry season rice is in harvesting stage, and yield condition is estimated slightly good than last year. The growing condition of dry season rice is generally good under proper rainfall, but the planting condition is still low level.

Precipitation condition in early of August

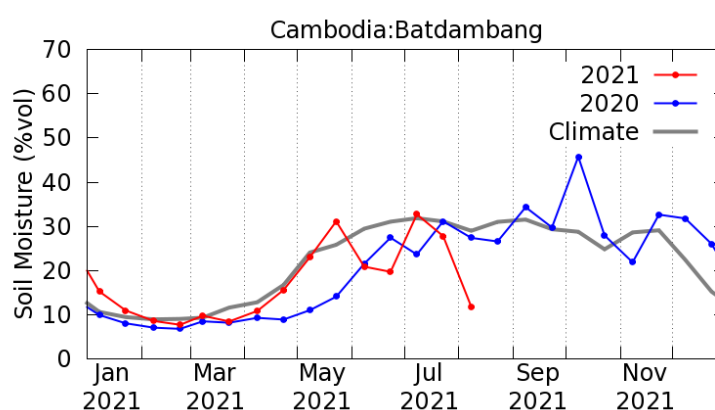


This map is provided by Indian Space Research Organisation (ISRO) under the APRSAF/SAFE agromet project

<https://www.eorc.jaxa.jp/SAFE/project/agromet>

Cambodia

The planting of wet season rice has almost been completed. The rainfall condition seems to be uneven across the country and some regions in the North-west were deficient in agricultural water. The drought area expanded to 2% of the planted area in the North-west. The yield is forecasted to slightly decrease due to drought in that area. The early wet season rice harvest has already started in 27% of the cultivated area. The current yield is estimated at around 4.00 tons per hectare, it is the same as the previous year.



Soil Moisture Time Serise Graph by JASMIN: Some regions in the North-west were deficient in agricultural water

Indonesia

This August is the fifth month of planting dry season rice. The planting condition is still low level due to the continuous cropping of wet season rice and also farmers are still preparing the land after harvesting the wet season rice.

This August is also the second month of the dry season rice harvest. The harvest of dry season rice so far is 1.9 million hectares and the progress is 7.5% lower than last year. The yield condition of dry season rice is forecasted to be 0.7% higher than last dry season due to enough precipitation during the growing season.

The rainfall is decreasing in the dry season, but no significant damage was reported.

Laos

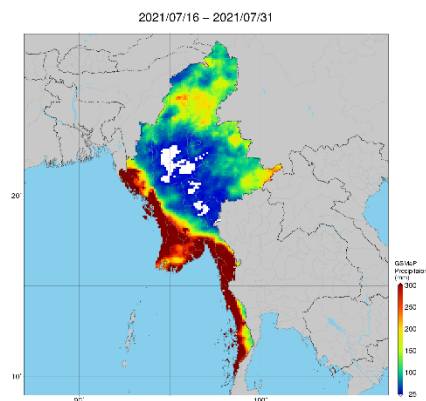
The growing of wet season rice of lowland is in the young panicle forming stage. The weather condition and irrigation water in this season is generally good for the paddy growing. In the second half of July, some paddy planted areas in the Northern and Southern regions were hit by flood due to heavy rain, but no damage has been reported.

On other hand, the upland rice is in the young panicle forming stage under good condition. This rainy season is forecasted to be enough rain.

Myanmar

Planting progress of wet season rice has reached 4.27 million hectares, accounting for 70% of the national plan (6.09 million hectares). In this month, monsoon rain favored the planting work of the wet season rice and the planting is in the peak period. The progress of planting work is slightly faster than last year.

The monsoon floods caused in wide areas especially in the lower Myanmar and river basin areas due to heavy rain during this month. About 8,100 hectares of planted areas have been affected by the floods and about the damage of 265 hectares has been reported. But replanting would be operated for those damaged fields. Most wet season rice is now at the tillering stage to panicle formation stage.

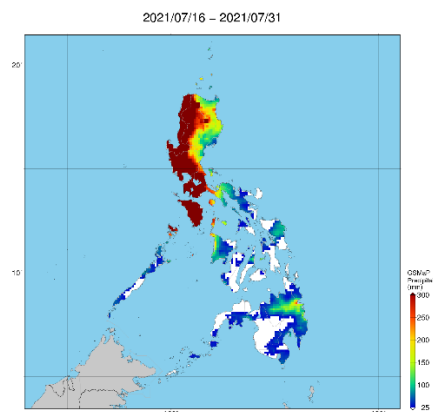


Precipitation Map by JASMIN: The monsoon floods caused in wide areas especially in the lower Myanmar

Philippines

Wet season rice planted in April to May is in the maturing stage to the harvesting stage. During late July, typhoon “Fabian” enhanced the Southwest monsoon that brought heavy and continuous rains which resulted in flooding and landslides in several areas of Luzon and Visayas. However, the rice did not suffer serious damage because many fields have been harvested prior to the occurrence of Southwest monsoon.

Generally, the crop growing condition of wet season rice was good in most provinces of the country. Moderate to high precipitation was noted in Northern Luzon and in some provinces in Mindanao.



Precipitation Map by JASMIN: Typhoon "Fabian" enhanced the Southwest monsoon in Luzon and Visayas.

Thailand

Wet season rice is in the tillering stage to the young panicle forming stage. The growing condition is good due to proper rainfall for all regions and the production is expected to increase. For the last 3 years, the rainy season had been started later than usual. However, this year, it started in a timely manner which may allow farmers in the Northern and central regions to plant the second crop of wet season rice after the harvesting. The planted area is forecasted to increase by favorable weather and satisfied paddy price.

Vietnam

In the North, the summer-autumn rice is in the young panicle forming stage. In addition, the main wet season rice (seasonal rice) is in the seeding stage. The rice-growing condition is good due to better irrigation preparation.

In the South, the summer-autumn rice is in the harvesting stage. The harvested area reached 0.44 million hectares out of 1.77 million hectares planted. The yield is forecasted to be slightly higher than last year due to warm weather and better irrigation preparation. In addition, the other wet season rice (autumn-winter rice and seasonal rice) is in the seeding, tillering, and young panicle forming stages under good growing conditions.