



# Rice Growing Outlook Report

**April 2021**



## **Rice Growing Outlook Report**

**April, 2021**

---

### **Overview**

In the Northern side of SE-Asia, April is the peak month dry season rice harvest. In this seasonal rice, initially there was some concern about the growth condition due to lack of irrigation water in some countries and regions. However, as the good trade price of rice, farmers have strived to secure the agricultural water, and as the result, the harvested area is expected to be about the same as the previous year, and the yield also is estimated to be fair to slightly good with previous year. On the other hand, in South Vietnam, the sowing of wet season rice has started earlier than usual and Cambodia is in field preparation.

In the Southern side of SE-Asia (Indonesia), the harvesting of wet season rice is progressing steadily. The yield is expected to be fair under enough irrigation water and sunlight. If it is as usual, this April is the first month of planting dry season rice, but the planted area is limited.

### **Cambodia**

The harvesting of dry season rice has almost been completed and the yield is estimated 4.5 tons per hectare. The high temperature continued in April, and it increased rainy days too. The farmers started to plow the rice field for planting of early wet season rice.

Generally, the yield condition of dry season rice is good and the average yield is slightly increased than last year.

### **Indonesia**

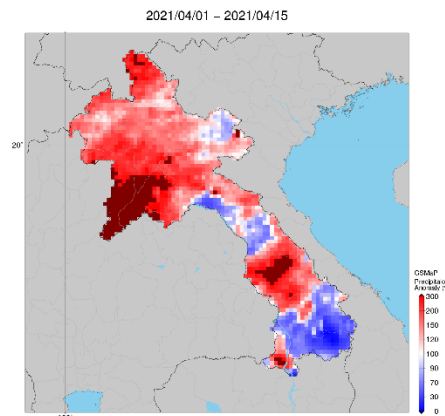
April is the fourth month of harvesting the wet season rice which the prospect of harvesting is 1.3 million hectares, 18.3% lower than last year. The yield is expected to be fair under enough irrigation water and sunlight at the flowering phase.

If it is as usual, this April is the first month of planting dry season rice, but the planted area is limited. The April precipitation is at moderate to a high level in the North area such the North Java, Sumatra, but no reported of the flood.

## Laos

In this month, the main growing stage of dry season rice is in young panicle forming stage to harvesting stage. The final planted area is 88 thousand hectares, 96 % of the national production plan. The harvesting has progressed to about 8 thousand hectares.

In general, the rice-growing condition in this month is quite good, the weather condition and irrigation supply in this season still favor for the rice growth.

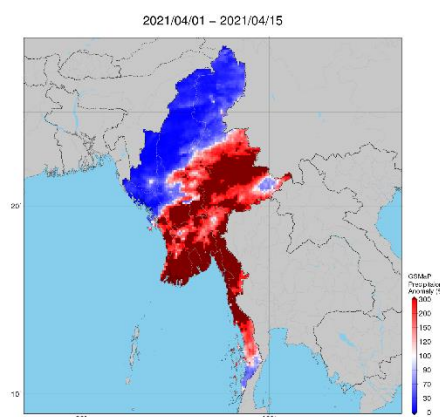


Precipitation Anomaly Map by JASMIN: Irrigation supply in this season still favor for the rice growth

## Myanmar

Planting of the dry season rice has been closed with 881 thousand hectares that account for 81.3% of the national plan (1.08 million hectares). Similar to last year, about 394 thousand hectares of the dry season rice that accounts for 44.7% of total planted area has been harvested in 6 (out of 15) regions and states mainly located under lower Myanmar. It produced 1.89 million tons of paddy with a yield of 4.80 tons per hectare. The yield is good but slightly lower than last year.

Heavy rain with strong wind occurred in second week of April in this year, however, it doesn't have any adverse effect on both rice growth and the harvest. The overall condition of growing and harvesting the dry season rice is good and most of the growing stage is in maturity stages.



Precipitation Anomaly Map by JASMIN: Heavy rain with strong wind occurred in second week of April

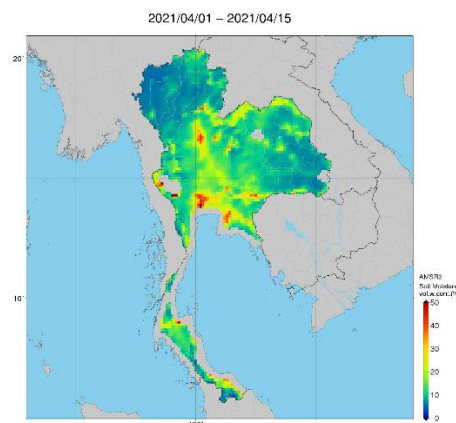
## Philippines

Dry season rice planted during the period of November – December is currently in the harvesting stage. About half of the planted area has been harvested already. Yield is expected to be good as most regions received sufficient rainfall. The growth in some provinces of Visayas and Mindanao has recovered due to good weather conditions after experiencing tropical storm during the growing season.

Generally, the crop growing condition of dry season rice in the country is good since most regions are expected to experience normal rainfall conditions for the whole month of April.

## Thailand

Now, the dry season rice farming is in the harvesting stage. Rice production is forecasted to steadily rise compared to that of last year due to the increase of cultivated area, while the rice yield is decreased by the shortage of irrigation water and natural water resources. In addition, the summer storm in April hit rice fields in some provinces from north to central regions. The pre-harvest rice is suffered from moisture damage by severe storms and heavy rain. High grain moisture will result in low prices.



Soil Moisture Map by JASMIN: The pre-harvest rice is suffered from moisture damage

## Vietnam

In the North of Vietnam, the winter-spring rice (dry season rice) is in tillering and young panicle forming stages. The growing condition is good due to warm weather and better irrigation preparation.

In the South, the winter-spring rice (dry season rice) is in the harvesting stage. The harvested area of dry season rice reached 0.76 million hectares out of 1.92 million hectares planted. The yield of harvested rice is 7.01 tons per hectare and a good harvest is expected.

On the other hand, the sowing of summer-autumn rice (wet season rice) in the Mekong River Delta proceeds at a good pace under stable weather conditions, and it's earlier than last year with the currently sown area of 0.18 million hectares.