



RICE GROWING OUTLOOK REPORT

MAY 2020



Rice Growing Outlook Report

May, 2020

Overview

In the Northern side of SE-Asia, the most countries are in final harvesting stage of dry season. Generally, the yield condition is estimated to be slightly poor from poor due to the irrigation water shortage during growing season. Whereas, South Vietnam with enough solar radiation during early growing stage is expected to be good yield. The wet season rice is in seeding and land preparation stage. Overall, the seeding work is likely to be delayed due to lack of rainfall, and the planting area is also expected to decrease.

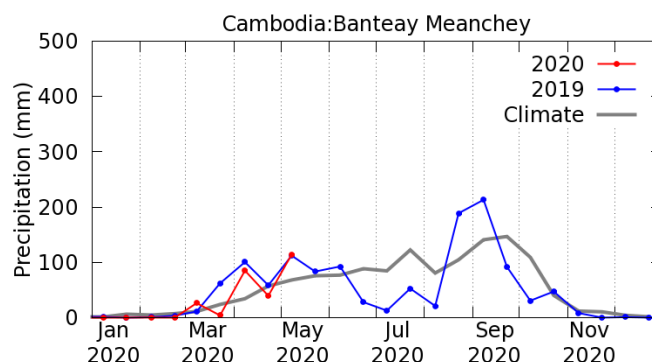
In Philippines, the crop condition cannot be grasped this month because survey operation was stopped due to the impact of COVID-19

In the Southern side of SE-Asia (Indonesia), the wet season rice is in final harvesting stage. The yield is forecasted to be slightly lower than last year due to less rainfall during growing season. The dry season rice planting is likely to be delayed due to the delay in wet season rice harvesting. Farmers just start land preparation of dry season rice in some areas.

Cambodia

May is the sowing season of wet season rice and it reached around 13% of national plan 2.58 million ha in this season. The rainy season in Cambodia has started in the middle of May with a thunderstorm.

Generally, the crop growing condition of wet season rice is good due to enough rainfall. This year's rainfall is expected to be higher than the previous year when it was drought.

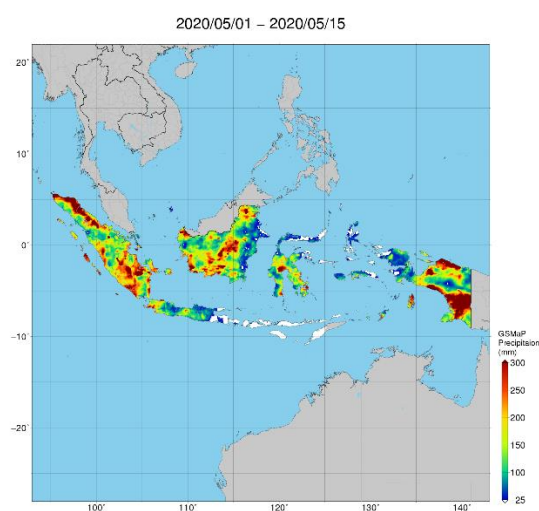


Precipitation Time series graph by JASMIN: The rainy season in Cambodia has started in the middle of May with a thunderstorm.

Indonesia

This May is the fifth harvesting month of wet season rice and it is 1.3 million ha or around 36.5% higher than last year. The yield is forecasted to be slightly lower than last year due to the less precipitation during the growing season.

This May is supposed to be the second month of planting the dry season rice. However, the cropping of wet season rice is continuing with the increasing of rainfall. Farmers have planted wet season rice until the end of February and early of March in some areas. Farmers start land preparation of dry season rice in some areas that finished the harvesting of wet season rice. Higher rainfall recorded in some areas in this month, but no significant damage was reported.



Precipitation Map by JASMIN: Higher rainfall recorded in some areas in this month

Laos

The dry season rice is at the end of the harvesting stage. The harvesting has progressed to about 64% of the planted area. The final harvested area is estimated at about 97 thousand hectares, with the paddy production in total 397 thousand tons and the yield 4.1 tons/ha. Although the harvested area has increased compared to the previous year, the yield decreased due to the lack of irrigation water, and the decrease of final production.

The national plan of wet season rice is approximately 850 thousand hectares and it is in land preparation.

Myanmar

Up to May 2020, about 700 thousand hectares of dry season rice from 7 (out of 15) regions and states in Myanmar have been harvested. It produced 3.4 million tons of paddy with a yield of 4.85 tons/ha. The yield is good and similar to last year. The weather is so hot often together with strong wind and light rain. It doesn't have any adverse effect on the harvest of the dry season rice.

For wet season rice 2020, some farmers begin seeding rice in this month but the data is not yet reported officially. Due to COVID-19 impact, the direct dry seeding rice method is adapted this time in accordance with WHO guidelines to avoid working mass employees into the farm.

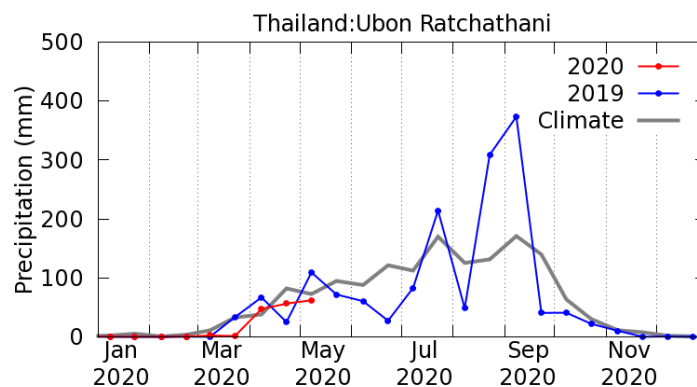
Philippines

The crop condition cannot be grasped because survey operation was stopped due to the impact of COVID-19

Thailand

Thailand's dry season rice is in the harvesting stage. The production is forecasted to decrease due to the reduction of planted area and yield. Unfavorable weather and drought made cultivated area decreased around 1/3 and paddy grains were underweight.

The wet season rice is in the field preparation time. The planted area is forecasted to decrease due to the shortage of rainfall.



Precipitation Time series graph by JASMIN: the planted area is forecasted to decrease due to the shortage of rainfall.

Vietnam

In the North, the winter-spring rice (dry season rice) is in young Panicle Forming stage. The rice growing condition is good due to warm weather and better irrigation preparation.

In the South, the winter-spring rice (dry season rice) is in the harvesting stage. The harvested area reached 1.68 million ha out of 1.91 million ha planted. The yield of the harvested area is 6.94 tons/ha, 3.6% higher than last year due to enough solar radiation during the earlier planting stage. On the other hand, the summer-autumn rice (wet season rice) starts to sow. The current sown area has reached 0.66 million ha. The sowing work is slower than last year due to the effect of drought and salinity.