



RICE GROWING OUTLOOK REPORT

MARCH 2020



Rice Growing Outlook Report

March, 2020

Overview

In the Northern side of SE-Asia, the most of dry season rice is in grain filling to harvesting stage. The final planted area of dry season rice in this season was decreased due to the shortage of irrigation water by less rainfall last wet season. The area decrease was significant in Thailand and Myanmar. The yield condition is fair to slightly poor due to the agricultural water shortage during the growing stage. Furthermore, in the Mekong Delta of Vietnam, saline intrusion due to the lowering of the water level of the Mekong River is becoming more serious than usual year.

In the Southern side of SE-Asia (Indonesia), the harvesting work of wet season rice delays by the delay of planting due to less rainfall. The yield also is forecasted slightly lower than last year. Meanwhile, despite the end of the wet season, rice planting in the wet season is continuing still.

Cambodia

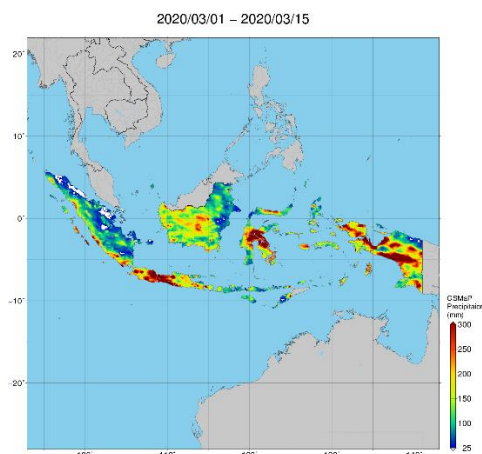
The final planted area of dry season rice reached 597 thousand and it was almost the same level as the last year. The harvesting of dry season rice has completed till 99% of the total planted area. The average yield is 4.4 t/ha, slightly decreased than last year due to the influence of drought.

Generally, the condition of dry season rice is fair because irrigation water was available in areas far from the irrigation system too.

Indonesia

March is the third harvesting month of wet season rice and it is 1.1 million hectares and 35.9% lower than last year. The yield is forecasted slightly lower than last year due to the drought still occurred until last December.

This March is supposed to be the last month of planting the wet season rice. But the planting is continuing still with the increase of rainfall. Farmers have begun to plant wet season rice at the end of January in most areas. It is also continuing in early February and March in some areas. Higher rainfall was recorded in some areas this month, but no significant damage was reported.



Precipitation Map by JASMIN: the planting is continuing still with the increase of rainfall had little rainfall during the dry season

Laos

The total planted area of dry season rice until the end of February reached 907 thousand hectares (101% of production plan). The rice growing condition is in tillering to young panicle forming stage and the growing condition is generally fair. The weather condition and irrigation supply in this month are good for growing the paddy.

Myanmar

In Myanmar, planting of the dry season rice is almost completed with 858 thousand hectares that account 78% of the national plan (1.1 million hectares) because the rest areas planned for the dry season rice may not be planted due to limited irrigation water. The progress of planting work is smooth and the stable weather promotes the growth of the rice.

Early planted dry season rice is already at the reproductive stage in this month. And about 60 thousand hectares mainly in delta area have been harvested. It produced over 244 thousand tons of paddy with a yield of 4.05 t/ha. The yield is good and similar with last year.

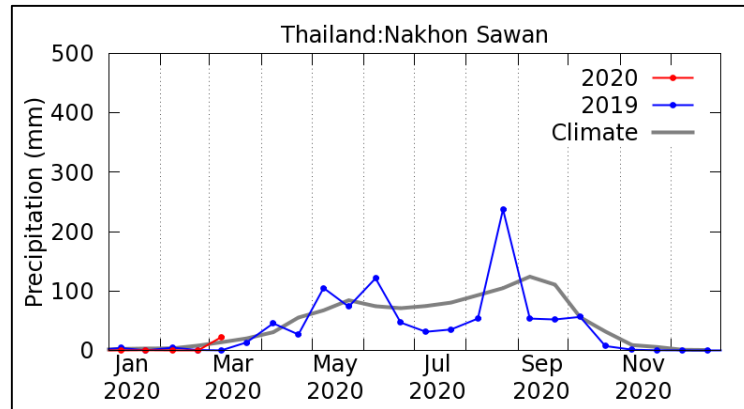
Philippines

Dry season rice planted during the period of November – December is currently in the maturing up to the harvesting stage. Yield may decrease for about 6 percent due to insufficient soil moisture during crop growth and development. Harvest areas may also contract about 3.7 percent than last year.

Generally, the crop growing condition of dry season rice was slightly poor in most provinces. Most regions are expected to experience normal rainfall conditions during the month.

Thailand

The dry season rice is in the grain filling stage and harvesting stage. The planted area is forecasted to decrease from last year about 1/3 due to shortage of irrigation water and natural water resources. The growing condition is not good because the shortage of water made underweight grain. Moreover, there are some damage areas by pest in Northern region.



Precipitation Time series graph by JASMIN: shortage of irrigation water and natural water resources due to less precipitation last wet season

Vietnam

In the North, the sowing of winter-spring rice (dry season rice) is ongoing. The total sown area is 0.8 million hectares and it's almost the same as last year. The rice growing is good due to warm weather and better irrigation preparation.

In the South, the sown of winter-spring rice (dry season rice) has completed. The total sown area is 1.91 million hectares, 3.9% lower than that of last year due to saline intrusion. The affected area by saline instruction reached about 17.6 thousand hectares. On the other hand, the harvesting starts in some provinces of the Mekong River Delta.