



# **Rice Growing Outlook Report**

## **August 2019**





## Rice Growing Outlook Report

August, 2019

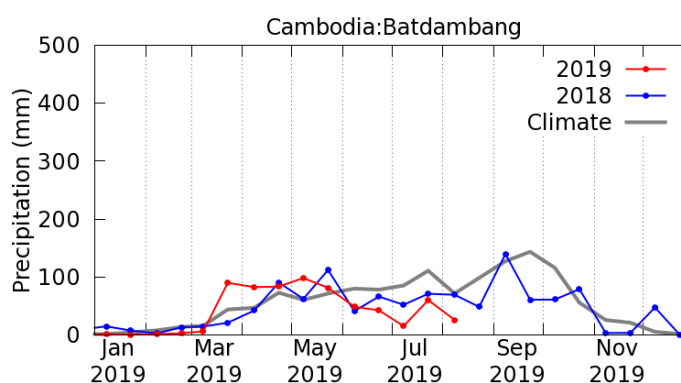
### Overview

In the Northern side of SE-Asia, the wet season rice is in growing stage and the harvesting of early planted areas already start in Philippines, Cambodia and South Vietnam. The weather condition in this month is extremely unstable, the tendency of less precipitation continues in most countries and areas, but the monsoon flood also is concerned in delta area of Myanmar. The growing condition is generally fair to poor due to less precipitation. Especially, the drought damage in north-west Cambodia and northeastern region of Thailand is serious.

In the Southern side of SE-Asia (Indonesia), the harvesting of early dry season rice starts and the yield is fair with last dry season. August is the fifth month of dry season rice planting, but the planted area is still low due to the concerns about the lack of rainfall.

### Cambodia

This month, the planting of wet season rice reached to 86% of the national plan. It seems to be slower than last year due to rainfall shortage. The drought area expanded to 13% of planted area in the north-west area and re-planted area by drought damage reached about 0.5% in whole planted area. On the other hand, some provinces along the sea and Mekong Lowlands area are concerned about flood damage due to heavy rain in this month. The early wet season rice is in maturing stage to harvesting time and around 11% of planted area is harvested. The yield is estimated around 4.32t/ha.



Precipitation time series graph by JASMIN: the tendency for shortage of rainfall continues

## Indonesia

August is the second month of harvesting the dry season rice which is planted about 1.3 million ha. The yield is expected to be fair with last dry season rice due to enough irrigation water and sunlight at flowering phase.

This August is also the fifth month of planting dry season rice, but it is still low level because farmers still prepare the land especially for upland rice. The early generative dry season rice is in a good growing condition. The dryness in northern part (Sumatera, Kalimantan and Sulawesi) seems normal and low intensity rainfall still continues irregularly. There are concerns about the lack of rainfall in some areas, but there is not reports of drought.

## Laos

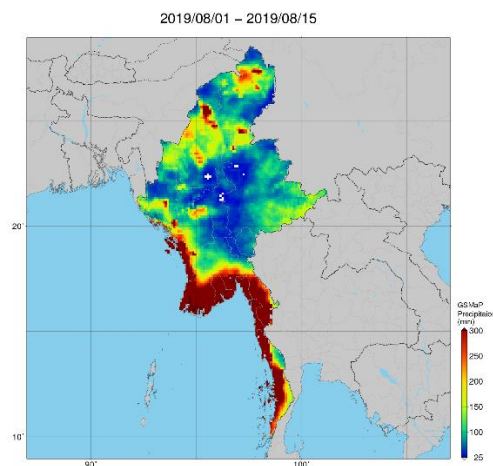
The lowland rained rice has been planted about 810 thousand ha (95% of national plan) until this month and almost rained rice is in the transplanting to tattering stage. In this rainy season, there is a tendency of poor rain, and there is a shortage of agricultural water for transplanting.

On the other hand, the upland rice has been planted a put 91 thousand ha (91% of national plan).

## Myanmar

Up to this month, the planting work of wet season rice is over 4 million hectares that accounts for 65% of the national plan (6.12 million hectares). The progress of the planting wet season rice is slightly slower as compared to last year due to delay monsoon.

Monsoon flooding due to heavy rain affects in most areas especially in the lower Myanmar and exceeding danger levels on rivers. There has been a landslide and becomes a natural disaster with numbers of damages. Over a whole country, the flood affects the planted wet season rice about 51 thousand hectares. Among them, over 4500 hectares of the wet season rice has been damaged and approximately one thousand hectares have been replanted.



Precipitation map by JASMIN: Monsoon flooding due to heavy rain affects in most areas especially in the lower Myanmar and exceeding danger levels on rivers.

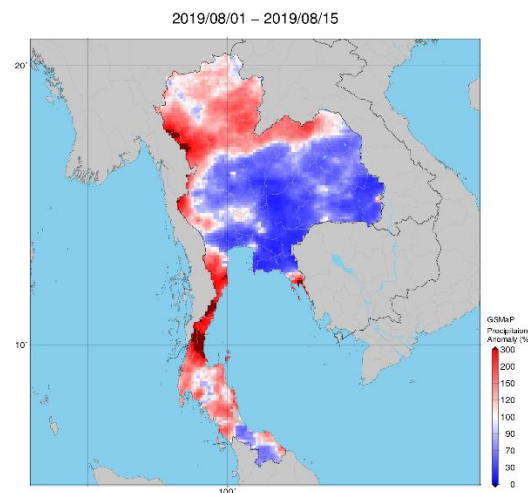


## Philippines

Wet season rice planted during the period of April – May is in maturing stage up to harvesting. About 89 percent of the 914 thousand hectares are expected to be harvested this August. Generally, the yield and crop growing condition of wet season rice is expected to be good in most provinces. Southwest monsoon also known as “Habagat” came near throughout the month of July that bring rains in the Western part of Luzon and some provinces in Visayas. Moderate to high precipitation was noted in Luzon Island.

## Thailand

The wet season rice is in the tillering stage to young panicle forming stage. The growing condition of wet season rice is not good due to less rain than normal in many areas especially in the Northeastern region which is the main rainfed paddy field in Thailand. By the shortage of rainfall affected the rice stem dry and poor panicles growing condition in some areas. For the Northern and Central region, the growing condition is fair.



Precipitation anomaly map by JASMIN: The growing condition of wet season rice is not good due to less rain than normal in many areas especially in the Northeastern region

## Vietnam

In the North of Vietnam, the wet season rice is in young panicle forming. The rice growing condition is slightly poor due to drought

In the South of Vietnam, the most wet season rice is in tillering stage and the early wet season rice of Mekong River Delta is the harvesting stage. The yield forecasts slight lower than last year due to heavy rain during growing season.