



# **Rice Growing Outlook Report**

**June 2019**





## **Rice Growing Outlook Report June, 2019**

---

### **Overview**

In the Northern side of SE-Asia, the rainy season started in the second half of May. And the planting of wet season rice has started in whole regions except for North Vietnam. The growing condition in early growth stage is generally good and the planting area seems to increase under adequate rainfall.

In the Southern side of SE-Asia (Indonesia), the wet season rice has almost completed. The yield is expected to be fair with last wet season. If it is as usual, this June is also under the planting of dry season rice, but the planted area is still low due to delay of agricultural work.

### **Cambodia**

The wet season rice which was planted reached to 35% of national plan. The growing is in tillering stage to early young panicle forming stage.

Generally, the growing of early wet season is fair to good. And the growing is slower than last year due to shortage of rainfall, but little raining area does not cover over the region in country.

### **Indonesia**

The harvesting of wet season rice has almost completed. The yield is expected to be fair with last year due to enough irrigation water and sunlight at flowering phase.

If it is as usual, this June is also the third month of planting dry season rice, but the planted area is still low due to farmers still prepare the land after harvesting the wet season rice. The lack of irrigation water condition and water shortages to be recovered by the rainfall in the late of May to middle of June. The early generative dry season rice is good growing condition. Despite the enter dry season, high rainfall still continues in some regions but no reporting of flooding.

### **Laos**

The dry season rice is completed harvesting in the whole country. The total harvested area is 89 thousand ha (89% of plan) with the production of 453 thousand tons. The yield is 5.10 tons per hectare, more than the previous year. On the other hand, the wet season rice in lowland rainfed field is in land preparation and seeding stage.

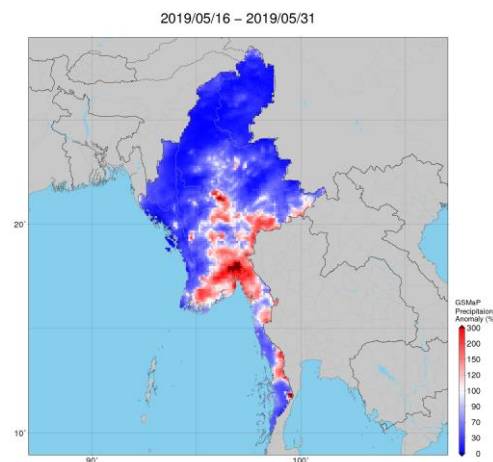
The plan for lowland rainfed rice is approximately 850 thousand hectares with the production of around 3.6 million tons.

## Myanmar

Up to June, the harvest of dry season rice has been done 845 thousand hectares that account for 75% of total planted areas. The production is 4.1 million tons of paddy with the yield of 4.81 t/ha<sup>-1</sup>. The yield is fair and similar to last year.

Planting work of wet season rice began in this month, and about 78 thousand hectares of wet season rice has been planted in rainfed areas. The national plan of wet season rice is 6.12 million hectares in this year.

As it is now rainy season in Myanmar, rain together with strong wind occurs frequently. However, any significant damage was not found on the planted dry season rice and harvesting work as well as on planting work of wet season rice.

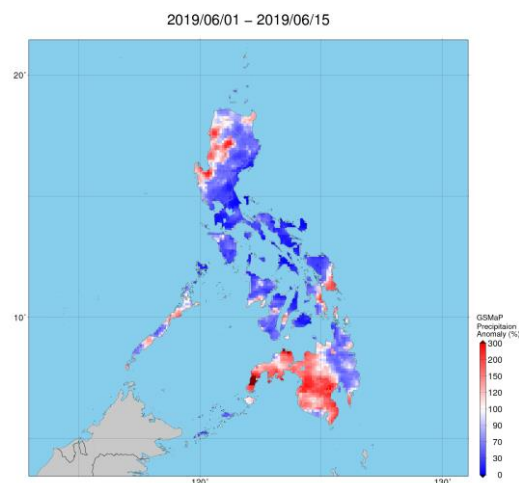


Precipitation anomaly map by JASMIN: rain together with strong wind occurs frequently

## Philippines

The wet season rice is in the tillering to young panicle forming stage. Rainfall assessment for the month showed that most areas of Northern Luzon experienced above normal rainfall conditions while in Southern part of Luzon received below normal rainfall conditions. There was no significant crop damage.

Generally, the crop growing condition of wet season rice is good for most of the provinces. Near normal condition of rainfall is expected for the remainder of the month in most part of the country. And it may ease the existing dry conditions.



Precipitation anomaly map by JASMIN: Northern Luzon experienced above normal rainfall conditions while in Southern part of Luzon received below normal rainfall conditions.

## **Thailand**

Wet season rice is in the time of sowing and start tillering stage. Rainy season started in the second half of May and bring adequate water for cultivating. Farmers plant more paddy rice by the motivation due to the increase of last year paddy farmgate prices. They expand the paddy areas by planting paddy rice in the fields that didn't cultivate last year and changing from sugarcane to rice. The growing condition of wet season rice is good by enough precipitation.

## **Vietnam**

In the North, the harvesting of winter-spring rice (dry season rice) starts in some provinces. The average yield is estimated at 6.38 tons/ha, 0.3% lower than the last year yield due to continual rain and monsoon in early growth stage although this winter was warm.

In the South, the harvesting of winter-spring rice (dry season rice) has completed. The total production of the region is estimated 13.34 million tons, 0.8% higher than last year. In which, the production in Mekong River Delta region is estimated 10.96 million tons and the average yield of Mekong River Delta region is estimated 6.83 tons/ha, approximately equal to the last year yield.

On the other hand, the summer-autumn rice (wet season rice) is under sowing. The sown area reaches 1.13 million ha. The sowing work is faster than last year because the harvesting work of dry season rice was smooth.