



# **Rice Growing Outlook Report**

**MAY 2019**





## **Rice Growing Outlook Report May, 2019**

---

### **Overview**

In the Norther side of SE-Asia, the harvest of dry season rice has almost completed except for North Vietnam. The yield condition is generally fair to good, but the harvested area is slightly decreased due to insufficient rainfall in Philippines and Thailand. On the other hand, the wet season rice is in the time field preparation to sowing time under favorable condition.

In the Southern side of SE-Asia (Indonesia), the wet season rice is in the harvesting time and the yield is expected to be fair with last wet season. If it is as usual, this May is also under the planting of dry season rice, but the planted area is still low due to delay of agricultural work.

### **Cambodia**

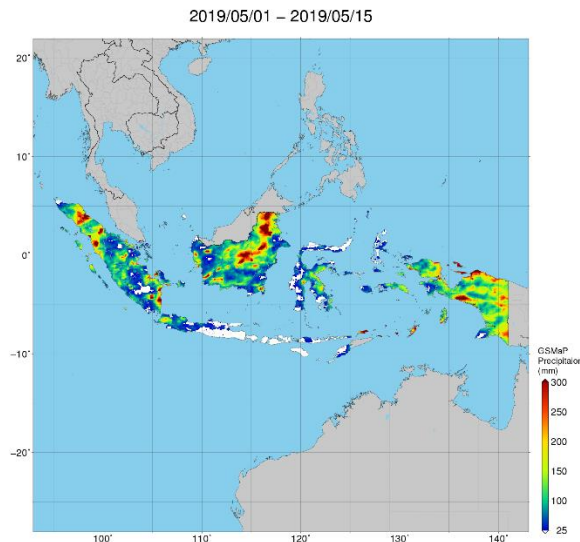
May is the sowing season of wet season rice. And the government plans 2.58 million ha for the planting of wet season rice in this season.

Generally, the crop growing condition of wet season rice is good, although there is a tendency less rain.

### **Indonesia**

May is the fifth month of harvesting the wet season rice which was planted on February about 0.9 million ha. The yield is expected to be fair with last season due to enough irrigation water and sunlight at flowering phase.

If it is as usual, this May is also the second month of planting dry season rice, but the planted area is still low because farmers still prepare the land after harvesting the wet season rice. The lack of irrigation water condition and water shortage seem to be recovered by rainfall occurred in the late of April to middle of May. The early generative wet season rice is in good growing condition. Despite the enter dry season, high rainfall still continues in some regions, but there are no reports of floods.



Precipitation map by JASMIN: Farmers still wait enough rainfall for planting of dry season rice

## Laos

The dry season rice is in harvesting stage. During this month, the farmers hurry up the harvest before rainfall. The weather condition is good for the harvesting and harvested area reaches approximately 65% of planted areas. The yield condition is generally good. On the other hand, the planting of wet season rice has not yet started.

## Myanmar

The planting of dry season rice has been closed with 1.12 million hectares. The planted areas increased which is compared to last year due to favorable environment.

About 705 thousand hectares of the dry season rice has been harvested in delta region. It produced 340 thousand tons of paddy with a yield of  $4.8 \text{ t ha}^{-1}$ . Although there were some rainy days with hot climate due to the effect of tropical cyclone named “Fani”, it was not found any significant damage on the planted dry season rice and harvesting work. The planting work of wet season rice has not yet started.

## Philippines

Dry season rice planted in November-December was fully harvested. About 4.42 million metric tons of production was noted during the period and it declined by 4.5% compared to the same period last year due to insufficient rainfall and adverse effect of drought to most part of the country. Likewise, area harvested and yield also decreased by 3.5% and 1% respectively.

Preparation and planting of wet season rice has already started. The rainfall condition will likely be near normal in most parts of the country and it will ease the existing drought conditions.

## **Thailand**

The harvesting of dry season rice has almost completed. The production is forecasted to slight decrease due to decline in planted area came from the decrease in Northern and Northeastern region due to shortage of water and unfavorable weather while the planted area of Central region is increased. However, the yield of all regions is slight increase compared to last year due to sufficient water for cultivation, except for the yield in the Northeastern region.

The wet season rice is in the time of field preparation. Farmers plow their fields and wait for rain which is expected to fall at the end of this month. The planted area is forecasted to increase due to high motivation of farmers based on last year's high paddy price.

## **Vietnam**

In the North, the winter-spring rice (dry season rice) is in vegetative period. The growing condition is good because of the stable weather condition.

In the South, winter-spring rice (dry season rice) is in the harvesting time. The currently harvested area is 1.76 million ha, it increases about 13% compared to last year. The average yield of Mekong River Delta region is 6.77 tons/ha, it's slightly lower than that of last year due to longer unfavorable weather over large areas. On the other hand, the summer-autumn rice (wet season rice) starts to sow. The current sown area has reached 705 thousand ha and it's earlier than last year.