



# **Rice Growing Outlook Report**

## **October 2019**





## **Rice Growing Outlook Report**

**October, 2019**

---

### **Overview**

In the Northern side of SE-Asia, the wet season rice is in growing to early harvesting stage. The flood damage due to heavy rain by some tropical monsoons is becoming clear in all area and there is concern that the impact of this damage lead to yield decrease. Furthermore, the damage remarkable areas are the Northern, Northeastern and Central areas in Thailand, the North Vietnam, the Northern part of Luzon in Philippines, the Northern part in Cambodia, the South Laos and all area in Myanmar. Generally, the yield condition of this wet season rice is estimated to be slightly poor due to the drought damage of early growing season in June and July and flood damage of generative season after August.

In the Southern side of SE-Asia (Indonesia), the rainy season has started. However, this month's planting of wet season rice is below average due to water shortage at the end of dry season. On the other hand, the yield condition of late dry season rice is slightly lower than last year due to drought.

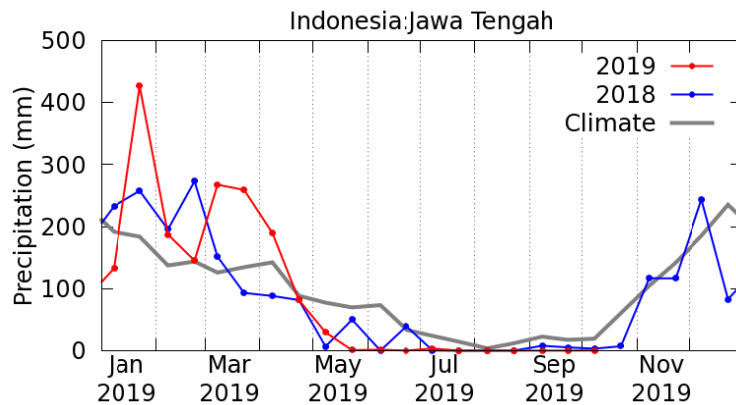
### **Cambodia**

The planted area of wet season rice reached 2.71 million ha, it's 105 percent of the national plan. This season, the drought and flood affected around 14% of cultivated area in north western to lowland areas of Mekong basin and around 2.3 % of planted area were completely damaged by drought and flood. Around 15 % of wet season rice has been harvested by this month and the yield is estimated around 3.9t /ha slightly decrease with normal.

### **Indonesia**

Normally in October, rainy season is expected to commence in most provinces in Indonesia. However, this month's planting of wet season rice is below average as a result of water shortage at the end of dry season. On the other hand, the generative dry season rice which was planted in the rice field with technical irrigation such as in the northern part of Java and Bali on August and September is in a fair growing condition.

This October is also the fourth month of harvesting the dry season rice. Total harvested area is estimated about 0.91 million ha, 4.3% lower than last year. The yield forecasts slightly lower than last year as a result of the drought.



Precipitation time series graph by JASMIN: Rainy season is expected to commence, but the planting of wet season rice is below average as a result of water shortage

## Laos

The wet season rice of lowland rice is in grain filling stage and early harvesting stage. The harvesting has progressed to about 20% of the planted area. In this month, flooding and pests damage occurred in around 66 thousand ha in some area of northern Southern region. Due to these damages, the cumulative damage area in this season increased to around 78 thousand ha.

Upland rice is in grain filling stage and early harvesting stage. The yield is concerned to decrease due to drought and pests damage during growing season.

## Myanmar

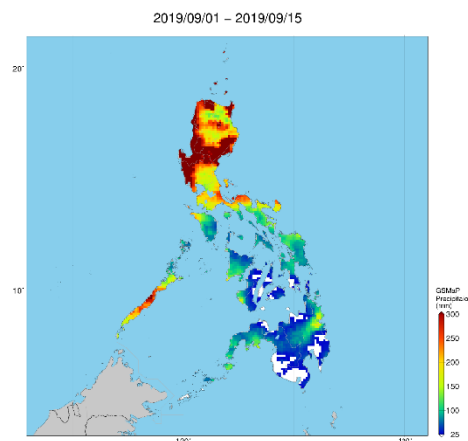
The wet season rice has been planted over 5.9 million hectares accounting for 97% of the national plan. The planting work is almost completed but slower than last year. During this month in Myanmar, almost 10 thousand hectares of early planted wet season rice were harvested mainly in the Northern areas and hilly regions.

Due to heavy rain, the flood affects the wet season rice over 118 thousand hectares in the whole country except Chin state, and 73 thousand hectares were damage. Among damaged areas, 33 thousand hectares have been replanted. In addition, other factors such as drought, strong wind, golden apple snail, rodents, etc. also affect the wet season rice.

## Philippines

Wet season rice planted during the period of April – May is still in the harvesting stage. The rice production is anticipated to drop around 4.7% due to lodging of rice attributed to strong winds and flash floods that brought by south west monsoon “Habagat” and the passage of the five tropical depressions in Northern part of Luzon. Likewise, below normal yield is expected because of flooding and moisture stress during the critical stage of growth and development of the crop.

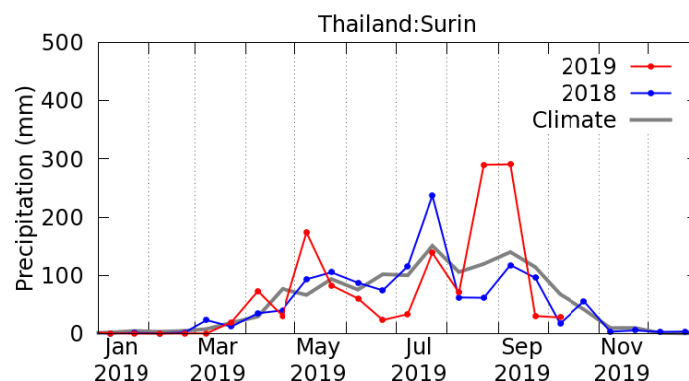
Generally, the crop growing condition of wet season rice is fair to slightly poor in most provinces of the country. In addition, rainfall assessment during this month is below normal conditions in some areas in Visayas and most part of Luzon and Mindanao.



Precipitationmap by JASMIN:Below normal yield is expected because of flooding and moisture stress during the critical stage of growth and development of the crop.

## Thailand

Now, wet season rice is in the Young panicle forming Stage continue to Grain filling Stage. The growing condition of wet season rice is not good in the Northern, Northeastern and Central region due to the poor growing in tillering stage by drought in June and July. Moreover, there were the exceed rainfall and flood by Kajiki and Podul tropical storm in August and Septemberand damaged the rice field in some area.



Precipitation time series graph by JASMIN:there were the exceed rainfall and flood in August and Septemberand damaged the rice field in some area.

## **Vietnam**

In the North of Vietnam, the wet season rice is in young panicle forming stage and early grain filling stage. And some provinces start the harvesting. Although it was concerned the less precipitation during growing season, the total planted area affected by drought was 2.6%. The yield is forecasted slight lower than last year due to drought.

In the South, the harvested rice area of wet season rice reached 1.69 million ha out of 1.83 million ha planted. The yield of harvested area is 5.5 tons/ha, 1.4% lower than last year due to heavy rain during growing season.