



Rice Growing Outlook Report

January 2019





Rice Growing Outlook Report January 2019

Overview

In the Northern side of SE-Asia, the harvesting of wet season rice has completed. While the seeding of dry season rice starts in all countries and area out of North Vietnam and is in the seeding time to tillering stage. The growing condition is generally good due to stable weather.

In the Southern side of SE-Asia (Indonesia), the harvesting of wet season rice started this January. This month is also the fourth planting month of wet season rice. The lack of irrigation water condition seems to be recovered by rainfall in the late December and January.

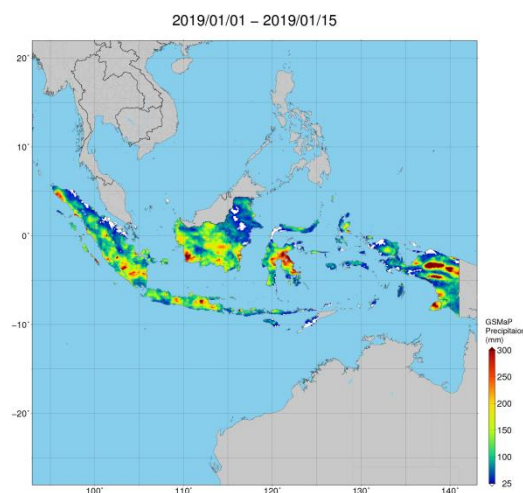
Cambodia

The harvesting of wet season rice has completed with 3.08 T/ha of average yield. While the dry season rice was planted around 538 thousand ha beyond the national plan due to good weather for planting. The growing is in tillering - panicle forming stage. Generally, the growing condition of dry season rice is good due to enough irrigation water and sunshine.

Indonesia

The harvesting of wet season rice started this January. The yield is expected to be average under enough sunlight during growing period.

This January is also the fourth planting month of wet season rice. The lack of irrigation water condition and water shortages seems to be recovered by rainfall that occurred in the late December to January 2019. Uneven rainfall still continues in many areas and also causes flooding in several places but no caused of significant damage to rice growing.



Precipitation map by JASMIN: Uneven rainfall still continues in many areas.

Laos

The harvesting of wet season rice has completed. The harvested area was 693 thousand ha and the total damage area was approximately 92 thousand ha by flood mainly. The total production is estimated about 3 million tons with the yield of 4.35 ton per ha. It decreased compared to the previous year due to serious flood.

While the dry season rice is in the seeding and transplanting time. The production plan in this year is 100 thousand ha with the production of 510 thousand ton

Myanmar

Up to this month, the harvesting of wet season rice has almost completed. The paddy production is over 20 million tons with the yield of 3.76 t ha⁻¹. The condition of the harvesting work and the rice yield is fair and similar to last year. There were some unexpected rainy days during first week of January. It did not have any serious effect on the harvesting work but may be concerned about the quality and quantity loss of harvested rice.

National plan of dry season rice 2018-2019 is 1.06 million hectares. Up to January, over 410 thousand hectares of the dry season rice accounting 39% of the national plan have been planted. An unexpected rain in this month encouraged the planting work of the dry season rice.

Philippines

The dry season rice is already in the tillering to young panicle forming stage. The planted area is around 1.13 million hectares, decreased by 7.9% from the previous year's level.

For the second half of December, Southern regions were affected by Typhoon "Usman". On the other hand, the national rice production was not heavily affected since the peak of harvest was done.

Generally, the growing condition of dry season rice is good in most provinces as the country is expected to experience good weather condition.

Thailand

The dry season rice is in the tillering stage. The planted area is expected to be decrease compare to the last year because there are not enough rainfall and irrigation water. In addition, government policy encourages to change the rice field to other crops such as maize. Generally, the growing condition of the paddy is good due to the utilization of reserve water for field; however, there are pest outbreaks in some area in the Northern region.

Vietnam

The harvesting of wet season rice has completed in whole country. Total harvested area was approximately 4.51 million ha. The yield was higher than the last year in both of the North and South due to favorable weather during growing season.

The seeding of winter-spring rice (dry season rice) does not start yet in the North because this month is in the harvesting time of cold season crops like maize, sweet potato, peanuts, and vegetable. Meanwhile, the South is under the seeding time of winter-spring rice (dry season rice) and it progresses at the faster pace than the last year.