

Rice Growing Outlook Report



May
2018

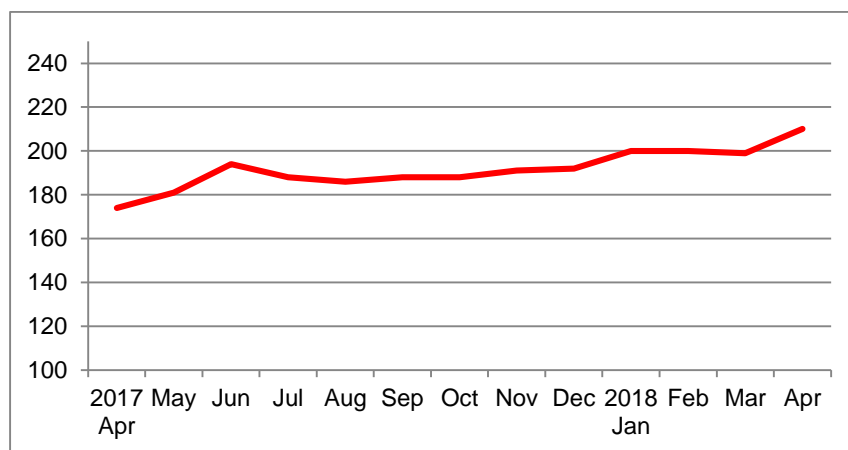


Rice Growing Outlook Report May 2018

Overview

In the Northern side of SE-Asia, the harvesting of dry season rice is nearly complete excluding North Vietnam and Laos. The yield is expected to be good due to sufficient irrigation water and stable weather condition. On the other hand, Cambodia, Thai and South Vietnam start the planting of wet season rice. The planted area is expected to increase on the background of firm price on the market.

In the Southern side of SE-Asia (Indonesia), the wet season rice is the fifth month of harvesting. The yield is expected average yield. If it is as usual, this May is the second month of planting dry season rice but it will be delayed by one or two months due to low level precipitation.



Market Price Index by FAO (High quality Indica rice 2002-2004=100)

Cambodia

May is the sowing season of wet season rice and 16 provinces in country have planted around 9.1% of national plan area 2.51 million ha. The growing seems to be faster than last year due to proper precipitation with last year.

Overall, the crop growing condition of wet season rice is good despite some flood is reported due to monsoon influence.

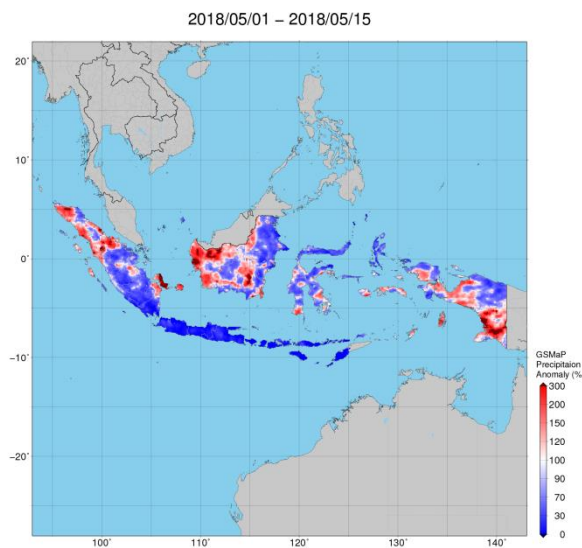
Indonesia

May is the fifth month of harvesting the wet season rice which was planted in February about 0.9 million ha, 26.7% lower than last year. The yield is expected to be fair with last wet season rice.

If it is as usual, this May is the second month of planting dry season rice but it will delay by one or two months due to moderate to low level precipitation, especially in the main paddy production provinces in Sumatera, Java-Bali, South Sulawesi Island and south of Indonesia.



Precipitation Graph by JASMIN: Indonesia continues less precipitation condition.



Precipitation anomaly map by JASMIN: The precipitation condition of main production area in Indonesia

Laos

The dry season rice is in the harvesting stage. The harvested area is approximately 45 thousand ha which corresponds to 55% of planted area. The production and yield are estimated 4 hundred thousand ton and 5 ton per hectare respectively. The farmers are in a hurry of the paddy harvesting because the rain starts earlier than last year.

Myanmar

The planting of dry season rice in Myanmar has been closed with 1.10 million hectares accounting for 95% of national plan. The planted area increased as compared to last year due to favorable environment for growing rice.

Over 650 thousand hectares of dry season rice mainly in Delta regions have been harvested and produced about 3.2 million tons of paddies with the yield of 4.82 t ha⁻¹. The yield is above the national average yield of dry season rice.

Philippines

Dry season rice planted during the period of November – December was completely harvested. The production was recorded at around 4.62 million tons, which was an increase of 4.6% compared to last year. The area harvested was around 1.19 million hectares, translating to a yield of 3.87 tons per hectare. As the high trading price was expected, the farmers took early harvest. Generally, the growing condition of dry season rice was good as the country experienced fair weather conditions.

Thailand

Around 80% of dry season rice was harvested in this month. The production is forecasted to increase due to the increase of planted area and yield by sufficient rainfall and irrigation water, although there were some pest and disease outbreak in the Northern region.

Under the enough rainfall, the wet season rice is in the time of field preparation and some area in the lower Northern region was already sown. Planted area forecasted to increase due to last year paddy prices were height and it is made farmers had motivation to expand their area.

Vietnam

In the North, the sowing of winter-spring rice (dry season rice) is completed. The final sown area is 1.14 million ha, accounting for 100.1% of last year area. The growing condition is good by stable weather condition.

In the South, this month is in the harvesting time of winter-spring rice (dry season rice). The current harvested area is 1.56 million ha, accounting for 79% of sown area while the current harvested area of Mekong River Delta region is 1.41 million ha, accounting for 89.6% of the sown area. The average yield of Mekong River Delta region is 6.79 tons/ha, 0.45 tons/ha higher than that last year. On the other hand, the summer-autumn rice (wet season rice) starts to sow with the current sown area is 518 thousand ha and the sowing work is somewhat late from last year.