

Rice Growing Outlook Report

September 2017





Rice Growing Outlook Report October 2017

— Overview —

Cambodia

The harvested area of wet season rice reached to 61% of planed area (2.56million ha). The yield is estimated around 3.88 t/ha with average year. The drought damage in Eastern area is being resolved by proper precipitation in September and the first half of October, however high temperature trend still continues.

Indonesia

October is the fourth month of harvesting the dry season rice. Total harvested area of the fourth dry season rice is estimated about 0.9 million ha, 1.9% lower than last year. The yield is expected to be higher than the last dry season rice due to enough irrigation water and sunlight. The generative dry season rice which was planted in August and September is in a good growing condition due to enough irrigation especially in the north of Java Island where there is the rice field with technical irrigation.

This October is the first month of planting of wet season rice too and it is in vegetative stages, the planted area is still small since the low rainfall and farmer is still waiting for enough water by wet season which will start in October to November. The October precipitation is low level in south of Indonesia but no reported of drought.

Precipitation and Drought Series Graph on Oktober 2017

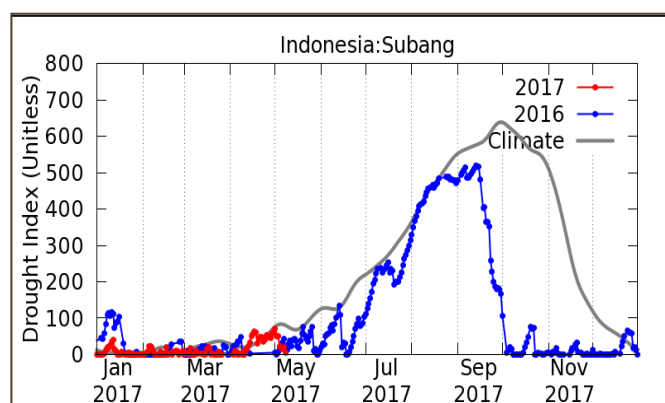
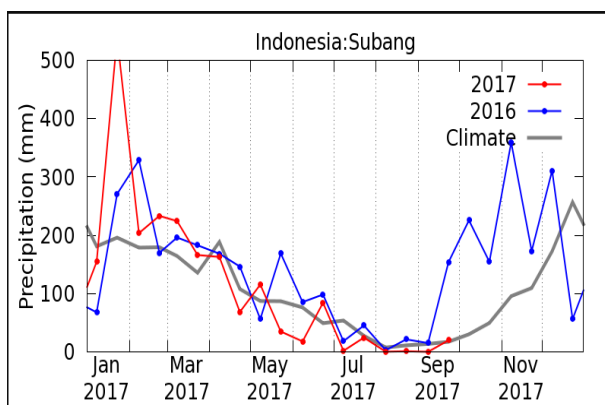
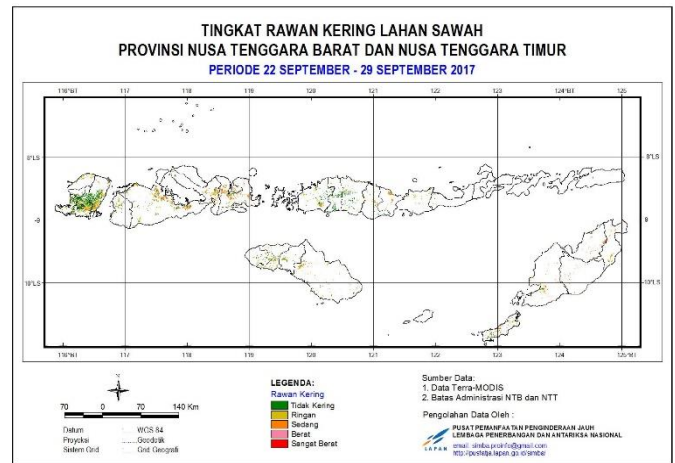
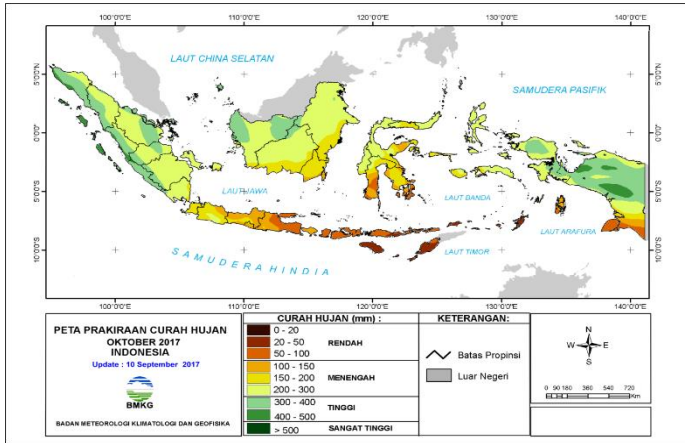


Figure 1. Time Series Graph of Subang Prcipitation

Figure 2. Time Series Graph of Subang Drought Index

Source data : JASMIN Website



Precipitation Forecast of Indonesia and Drought Level in Bali, West and East Nusa on Oktober 2017

Figure 3. Graph of Indonesia Precipitation

Figure 4. The Level of Bali, West and East Nusa Drought

Source data : Meteorology Climatology and Geophysics Council Website

Source data : LAPAN Website

Laos

The wet season rice of lowland is in the grain filling to harvesting stage. The planted area is approximately 788 thousand hectares. The weather condition in this month is normal. Some regions start the harvesting of paddy. The harvested area is approximately 5 thousand hectares with average year yield, 4 ton per hectare. The upland rice is in harvesting stage and the yield condition is normal.

Myanmar

Up to this month, about 6.11 million hectares of the wet season rice accounting for 97.5% of the national plan have been planted. The planting work in this year is going to finish at the end of this month. Moreover, about 15300 hectares of the wet season rice were harvested and 38400 tons of paddy were produced with the yield of 2.5 t ha⁻¹. The rice yield is low because the harvested areas are located in hilly regions under rainfed area and local rice varieties are used.

Flooding generally occurred during the wet season along the river basins and delta areas in Myanmar According to the damage record as of 9th October, 1338 hectares of planted areas were affected by heavy rain, and the areas of 70700 hectares were damaged. For the damaged areas, 22200 hectares have been replanted. In addition, about 50 hectares have been damaged by rodent.

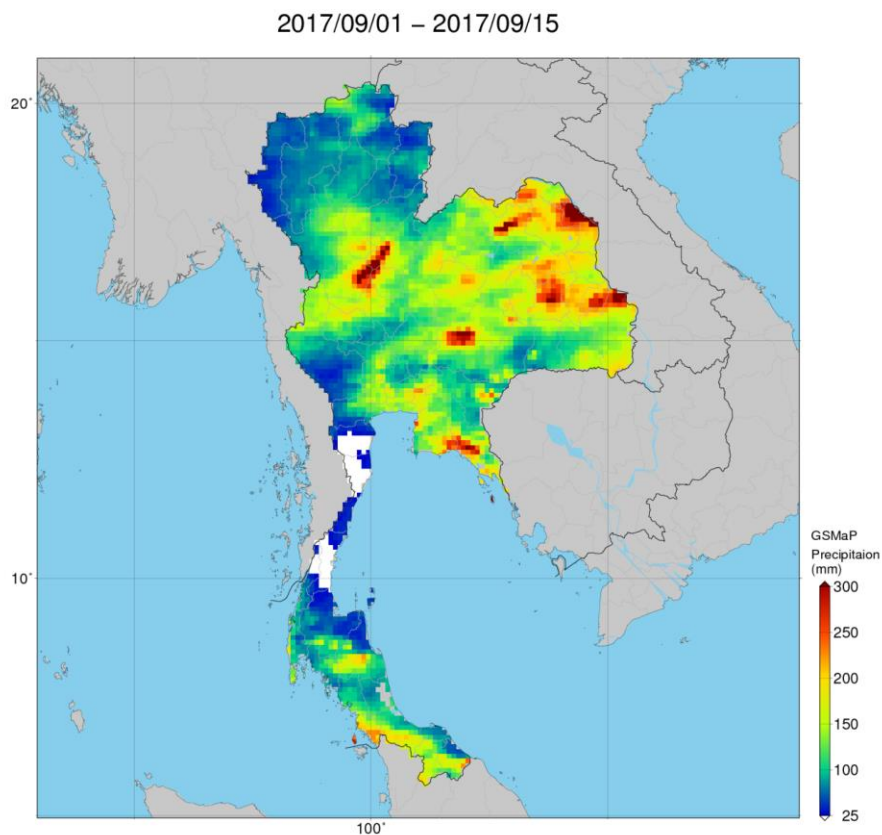
Philippines

Wet season rice planted in July - August is in the vegetative and reproductive stage. The weather systems that affected the country from September to October were the southwest monsoon, low pressure areas and passage of 3 tropical cyclones. It brought moderate to heavy rains and severe thunderstorms in Luzon Islands especially in northern regions and some provinces in Visayas region. There were no significant crop damages reported.

At the present moment, the crop growing condition of wet season rice is good in most provinces.

Thailand

Throughout the period, the monsoon trough lay across upper Thailand and it made heavy rain fall in every region. At the moment, wet season rice is in the Young panicle forming Stage continuing to Grain filling Stage. The growing condition is quite good due to sufficient rainfall except some area in the Northeast Region where flash flood spread which caused rice field damage and disease outbreak. Generally, the growing condition in Northeast isn't good by the effect from flood.



Vietnam

Some provinces in the North start the harvesting of wet season rice which sowed for 1.3 million ha. The yield of the harvested area is 5.03 tons/ha, 0.8% higher than the last year yields. Extraordinary heavy rain due to tropical cyclones was recorded in mid-October. Now the government is under the process of damage estimation.

In the South, the wet season rice which sowed for approximately 3million ha. Some provinces in the South were already harvested 1.53million ha. The yield of the harvested area is 5.47 tons/ha which is slightly decreased from last year. On the other hand, the planting of dry season rice starts in the Mekong River Delta.