



RICE GROWING OUTLOOK REPORT

OCTOBER 2020



Rice Growing Outlook Report

October, 2020

Overview

In the Northern side of SE-Asia, the wet season rice is in late growing stage mainly. The growing condition is generally good due to proper rainfall during early growing season, and the final yield also is expected fair to good expect in monsoon flood area like delta in Myanmar. In general, it can be said that the weather condition in this year was suitable for growing of wet season rice.

In the Southern side of SE-Asia (Indonesia), the harvesting of dry season rice is at its peak. The yield is forecasted slightly poor than last year due to the less precipitation during the growing season. This month would be the first month of planting wet season rice, however, the planting condition is still stays at low level.

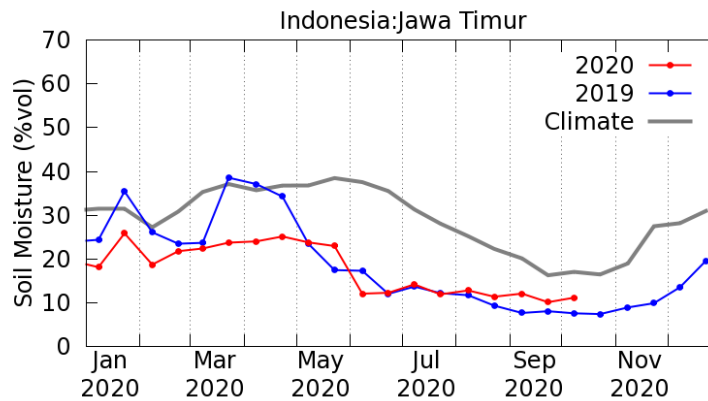
Cambodia

The planting of wet season rice has almost completed, and total area reached 2.74 million ha which is 106 percent of the national plan. In October, there is heavy raining, and the flood is occurring in whole region, especially in north western to lowland areas of Mekong basin. Around 54 % of wet season rice has been harvested by this month, and the yield is estimated around 3.7 t/ha, slightly decrease with normal year due to the influence of flooding.

Indonesia

This October is the fourth month of harvesting dry season rice. The total harvested of dry season rice reached 3.9 million hectares, and it is 10.5% higher than last year. The yield is forecasted slightly poor than last year due to the less precipitation during the growing season.

This October would be the first month of planting wet season rice. However, the planting condition is still low level at the beginning of wet season. The dryness seems normal with the irregular low intensity rainfall in some part of Sumatera, Kalimantan and Sulawesi. There are some drought damage in eastern part of Java and Lesser Sunda but no caused of significant damage to rice growing.



Soil Moisture time Series Graph by JASMIN: There are some drought damage in eastern part of Java

Laos

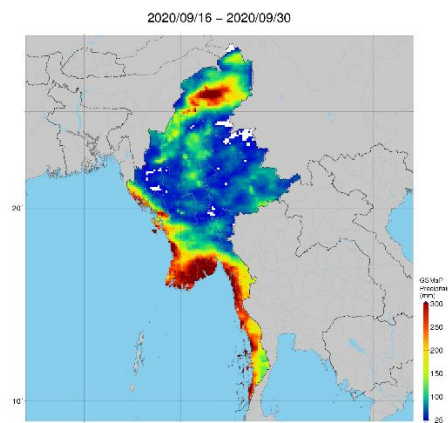
Wet season rice in this month is in grain filling stage to harvesting stage. The total planted area of lowland rice is 717 thousand hectares, equal to 96% of production plan. The harvested area has progressed about 18 % of the planted area. The weather condition in this month is generally good for rice growing.

On the other hand, the harvesting of upland rice reached approximately 48 thousand hectares, equal to 48% of the planted area. The yield is estimated about 2.1 ton/ha which is more than last year.

Myanmar

Up to this month in Myanmar, the wet season rice has been planted 5.98 million hectares that accounts for 97.6% of the national plan of 6.12 million hectares. The planting work is almost completed; however, some irrigated rice growing areas in the middle Myanmar are still progressing due to late monsoon. Generally, the growing stages on average is in tillering to panicle formation stage, but it is closed to maturity stage in early planted areas under rainfed of hilly regions. The progress of the planting work is fair and similar to the last year.

Monsoon flood due to heavy rain during this month, over 35 thousand hectares of the wet season rice were affected, and almost 20 thousand hectares were damaged. Among damaged areas, 9700 hectares has been replanted in time. The overall growing condition of the wet season is fair except delta and river basin areas where is regarding a damage of monsoon flood.



Precipitation Map by JASMIN: Monsoon flood due to heavy rain, over 35 thousand hectares were affected

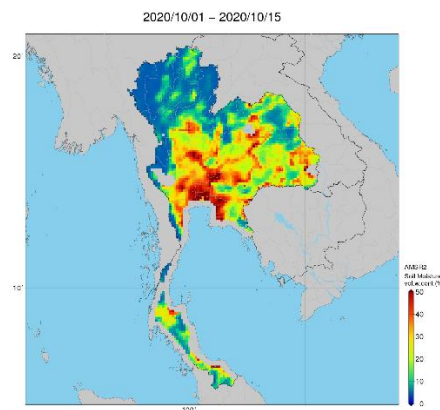
Philippines

Wet season rice planted in July – August is in heading to flowering stage. Three tropical cyclones have passed from September to October. These tropical cyclones did not make landfall. However, one of the cyclones enhanced the southwest monsoon and brought heavy rainfall in some parts of Southern and Eastern Luzon. Fortunately, there were no significant crop damages noted.

For now, the crop growing condition of wet season rice was good in most parts of the country. Hereafter, Northern Luzon and most parts of Visayas and Mindanao are expected to experience normal rainfall condition while the major portions of Central and Southern Luzon is expected to experience above normal condition.

Thailand

Currently, wet season rice is in the young panicle forming stage to grain filling stage. The production this year is forecasted to increase caused by expanding area and rising yield. The growing condition of wet season rice is better than last year although some provinces in Northern and Central regions were drought in early growing season. Moreover, some areas in Northeastern and Central regions are flood affected by tropical depression during 7 October to present. The damaged areas of rice field are forecasted to be 0.2% of total planted area.



Soil Moisture Map by JASMIN: Northeastern and Central regions are flood affected by tropical depression

Vietnam

In the North, the wet season rice is in grain filling stage, and some provinces start to harvest. The yield is estimated about 5.3 tons/ha, 0.6% higher than the last year due to better irrigation preparation.

In the South, the summer-autumn rice (early wet season rice) is in harvesting stage. The harvested area reached 1.49 million ha out of 1.77 million ha planted. In addition, the other wet season rice (autumn-winter rice and seasonal rice) is in young panicle forming and harvesting stages. The yield forecasts higher than last year due to good growing condition.