



RICE GROWING OUTLOOK REPORT

DECEMBER 2020



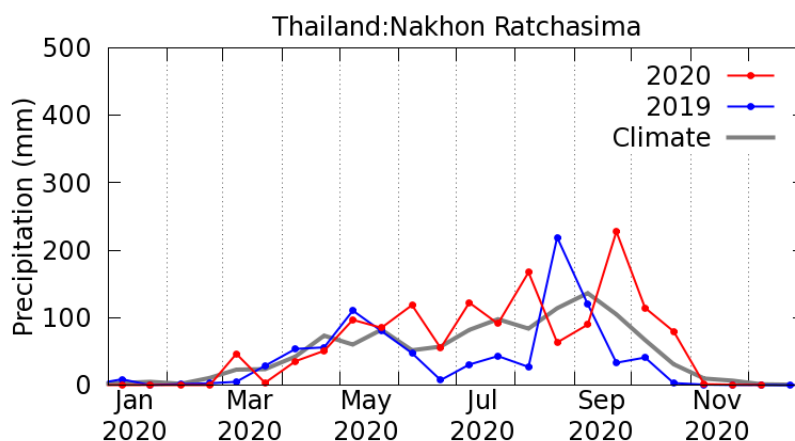
Rice Growing Outlook Report

December, 2020

Overview

In the Northern side of SE-Asia, the almost harvesting of wet season rice is expected to complete until end of this month. The total production is estimated to be fair due to proper rainfall during growing season. On the other hand, the area like Delta of Myanmar, Mekong basin of Cambodia and Northern Luzon part of Philippines where suffered flood damage by heavy rain due to southwest monsoon and typhoons are expected to decrease production. The dry season rice is in seeding stage. The planting work is a little behind the normal year, and the planted area is expected to decrease slightly.

In the Southern side of SE-Asia (Indonesia), the harvesting of dry season rice has completed in this month. The total harvested area increased and the yield is expected to be fair. The planted area of wet season rice is steadily expanding due to intensive rainfall in the late November to mid-December.



Precipitation time Series Graph by JASMIN in Thailand, Nakhon Ratchasima province:

The total production is estimated to be fair due to proper rainfall during growing season.

Cambodia

The planting of dry season rice reached up to 66% of national planting plan of 459 thousand ha, and the growing is in tillering stage.

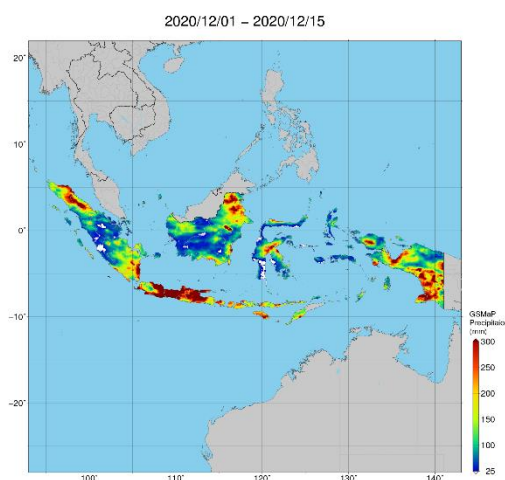
Generally, the growing condition of dry season rice is fair, but there is concern about water shortage in the fields far from the irrigation system.

Indonesia

The harvesting of dry season rice has completed this December. The total harvested area of dry season rice is 4.9 million ha, and it is 13.1% higher than last year. The yield is expected to be fair due to enough sunlight during growing period.

This December is also the third month of planting wet season rice. The planted area in this month is 0.4 million ha, and it is steadily expanding due to the intensive rainfall in the late November to mid-December. The rainfall caused flooding in several places but no caused of significant damage to rice growing.

On another note, the impact of the eruption of Mount Ile Lewotolok in East Nusa Tenggara has not affected the crop production because this area is not main crop producer for rice and maize.



Precipitation Map by JASMIN:

Intensive rainfall in the late November to mid-December promote the planting of wet season rice

Laos

The national planting plan of dry season rice in 2020 - 2021 season is approximately 98 thousand hectares, and the production is expected to be around 362 thousand tons. Now the planted area of dry season rice is about 9 thousand hectares. The weather condition and irrigation supply in this month is quite good, and the rice growing condition is in land preparation and seeding stage.

Myanmar

Up to this month, about 3.22 million hectares of wet season rice that account for 53.3% of the total planted area has been harvested. It produced 12.3 million tons of paddy with the yield of 3.83 t ha⁻¹. The harvesting work is expected to complete almost at the end of the next month. Although the total harvested area is not much reduced due to flood damage caused by heavy rain during monsoon season, the final average yield will be low because of less irrigation and low rainfall during early reproductive stages mainly in upper and middle Myanmar.

The national plan of dry season rice in this season is set as 1.08 million hectares. The planting work is slower as compared to last year. It is facing scarcity of irrigation water for the planting dry season rice in upper and middle Myanmar, and thus the total planting area of the dry season rice is expected to reduce in this season.

Philippines

Wet season rice planted during the July – August period was fully harvested. Production was around 7.39 million metric tons with a yield of 4.24 metric tons. About 186.40 thousand hectares were the combined affected areas from the onslaught of typhoons “Rolly”, “Quinta” and “Ulysses”. Generally, the yield condition of wet season rice in the country was good except for northern part of Luzon due to the effect of typhoons that resulted to lodging and flooding.

On the other hand, dry season rice planted in November – December is in the seeding period. The country experienced above normal rainfall conditions during this month.

Thailand

The wet season rice is in the harvesting period. The weather condition is good and has no rain which is good for harvesting. Although, there was some damage in Northeastern region by persistent rainfall and flood during October, the final paddy production is expected to increase due to continued rainfall through August to October.

The dry season rice is in the sowing period. Planted area is forecasted to decrease from last year due to lack of water supply from irrigation systems for supporting dry season rice cultivation. The government suggests farmers to grow crops that require less water than rice to reduce risk of production damage.

Vietnam

In the North of Vietnam, the planting of dry season rice (winter-spring rice) does not start yet because this month is in the sowing time of winter season crops, such as maize, sweet potatoes, peanuts, and vegetables.

In the South, the harvesting of wet season rice is completed. The average yield is estimated at 5.62 tons/ha, 2.2% higher than last year due to good weather condition during growing season.

On the other hand, in the Mekong River Delta, the dry season rice (winter-spring rice) which planted 1.04 million ha is in growing stage. The sowing is slower than last year due to the slow harvest of wet season rice.