



RICE GROWING OUTLOOK REPORT

AUGUST 2020



Rice Growing Outlook Report

August, 2020

Overview

In the Northern side of SE-Asia, the wet season rice is in growing stage and the harvesting also has started in Cambodia, Philippines and South Vietnam. The growing and yield condition are generally fair. The Northern region suffered heavy rainfall from the end of July to the beginning of August due to the tropical storms, but the wet season rice was in the early growing stages and did not cause serious damage. This rainfall seems to have alleviated the drought condition in this area.

In the Southern side of SE-Asia (Indonesia), the harvesting of dry season rice has started. The yield is forecasted slightly poor than last year due to the less precipitation during the growing season. On the other hand, the planting condition of dry season rice is still low level due to the delayed agricultural work.

Cambodia

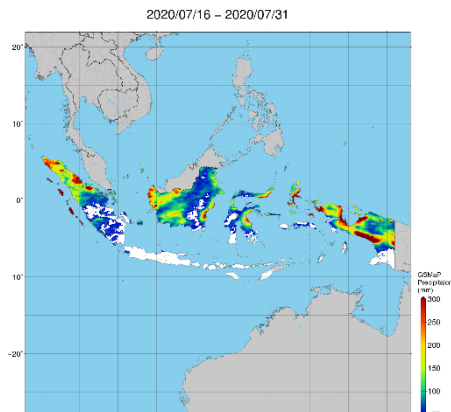
This month, the planting of wet season rice reached to 95% of the national plan. It seems to be normal year progress due to the stable rainfall. The growing condition out of drought area is fair. The early wet season rice is in harvest stage, and 16% of cultivated area is harvested. The yield is estimated around 4.15 t/ha, it's quite similar with the previous year.

While, the drought area expanded to 5% of planted area in the north-west and east-south area, and this drought damage reached around 0.3% in whole planted area.

Indonesia

This August is the second month of harvesting dry season rice. The harvested area so far is 2.1 million hectares and 2.5% lower than last year. The yield of dry season rice is forecasted slightly poor than last year due to the less precipitation during the growing season.

This August is also the fifth month of planting dry season rice. The planting condition is still low level due to the delayed agricultural work in wet season rice. Despite the dry season, it is still raining in Sumatra and Kalimantan. There is no significant damage was reported.



Precipitation Map by JASMIN: it is still raining in Sumatra and Kalimantan

Laos

Wet season rice planted of low land is currently in young panicle forming to tillering stage, and the growing condition is generally fair. Some provinces in the North region suffered the damage by flood about 213 ha due to the heavy rain in early July. In addition, the Central and South region have affected by drought, but no drought damage has been reported. On other hand, the upland rice is in tillering and young panicle forming stage under fair condition. The rainy season is forecasted to be poor rain.

Myanmar

Up to August 2020, planting progress of wet season rice became over 4.1 million hectares that accounts for about 70% of national plan. In this month, monsoon rain favored the planting work of the wet season rice and farmers utilize the most suitable planting practices by current weather. The progress of planting work is faster than last year.

Due to heavy rain at the end of July, monsoon flooding occurred in most areas especially in the lower Myanmar and river basin areas. The flood affected the planted wet season rice over 40 thousand hectares whole country. Among them, 7,700 hectares of the wet season rice have been damaged, and 84 hectares are replanted.

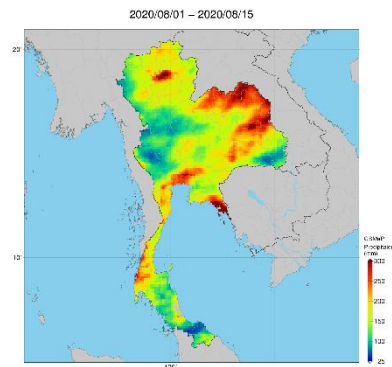
Philippines

Wet season rice planted in April-May is currently in maturing stage to harvesting stage. Around 50 percent of the 848 thousand hectares are expected to be harvested this August. During the past month, the weather systems that affected the country were southwest monsoon, low pressure areas and two tropical cyclones. One of the tropical cyclone brought heavy precipitation but did not cause damage to the crop. It was noted that most parts of country were experienced above normal rainfall conditions.

Generally, the crop growing condition of wet season rice was good in most provinces.

Thailand

Wet season rice is in the tillering stage. During 1-4 August, several provinces in Northern and Northeastern regions of Thailand have been hit by torrential rains, strong wind and flash flood triggered by tropical storm Sinlaku. This storm made flash flood damage in some rice fields in 9 provinces. The damage was insignificant because the flood drained rapidly. Although some areas in the North and the Northeast had suffered from less rainfall than usual in July, the growing condition is better than last year. The planted area is slightly increased by the farmer's high motivation due to the high paddy farmgate prices and government policy.



Precipitation Map by JASMIN: Northern and Northeastern regions have been hit by torrential rains, strong wind and flash flood triggered by tropical storm

Vietnam

In the North, the wet season rice (summer autumn rice) is in seeding and tillering stages. The rice growing condition is good due to better irrigation preparation.

In the South, the summer-autumn rice (early wet season rice) is in harvesting stage. The harvested area reached 0.55 million ha out of 1.78 million ha planted. The yield forecasts slightly lower than last year due to drought. In addition, the other wet season rice (autumn-winter rice) is in seeding and tillering stages under good growing condition.